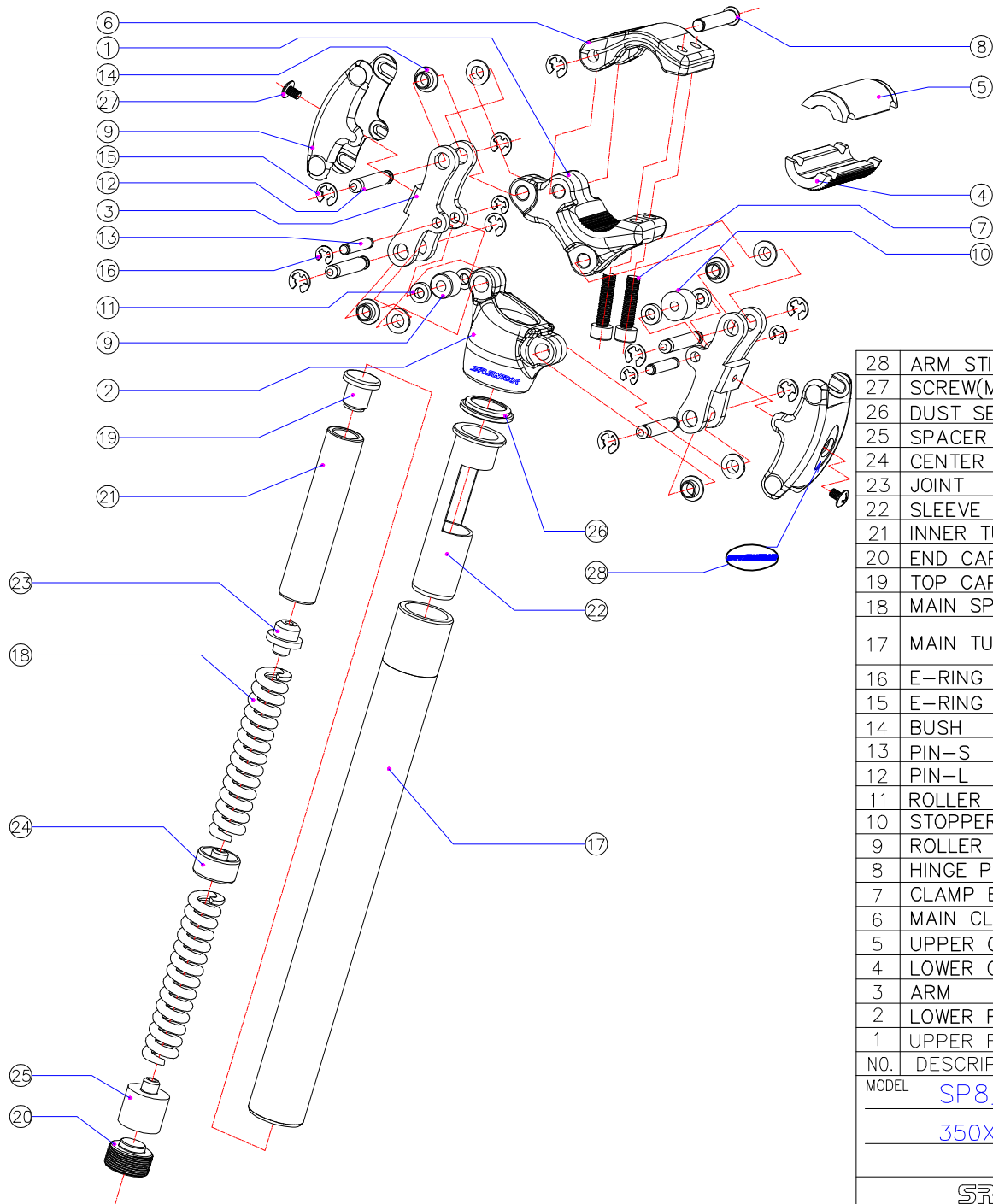


SR SUNTOUR



- Silver Print For Black Poder Coated
- Black Print For Barrel Finished



28	ARM STICKER	2	PEM002	Black(Silver Print)
27	SCREW(M4XL6)	2	CSB022	Zn Plated Black
26	DUST SEAL	1	PJP006	Black
25	SPACER	1	PJP005	Black
24	CENTER JOINT	1	PJP004	Black
23	JOINT	1	PJP003	Black
22	SLEEVE	1	PJP001	Black
21	INNER TUBE	1	PPP002	Silver Anodized
20	END CAP	1	PEC004	Ni Plated
19	TOP CAP	1	PEC001	Dacrodized
18	MAIN SPRING	2	PES001	Black
17	MAIN TUBE	1	PPP005(ø26.6)	Black Anodized or Silver Anodized
		1	PPP004(ø27.2)	
16	E-RING 4E	4	DFS006-51	Zn Plated Black
15	E-RING 5E	9	CMS007	Zn Plated Black
14	BUSH	8	PJP010	Black
13	PIN-S	2	PSP012	Black Oxidized
12	PIN-L	4	PSP011	Black Oxidized
11	ROLLER SPACER	4	PSW001	Black
10	STOPPER	1	PES002	Black
9	ROLLER	1	PEE002	Cr Plated
8	HINGE PIN	1	PSP112	Zn Plated Black
7	CLAMP BOLT(M6X25)	2	PSB009	Black Finished
6	MAIN CLAMP	1	PBD021	Barrel Finished
5	UPPER CLAMP	1	PBD023	Barrel Finished
4	LOWER CLAMP	1	PBD024	Barrel Finished
3	ARM	2	PBD014	Black Anodized or Silver Anodized
2	LOWER FRAME	1	PBD008	Black Powder Coated or Barrel Finished
1	UPPER FRAME	1	PBD022	Black Powder Coated or Barrel Finished
NO.	DESCRIPTION	QTY.	PART NO.	REMARKS

MODEL **SP8_NEX ASS.Y**
350X27.2 & 350x26.6

SR SUNTOUR KUNSHAN

SCALE	Free	APP'D
	 	CH' D
DATE	22,DEC.2008	DRAWN
		JAMES
DRAWING NO.		