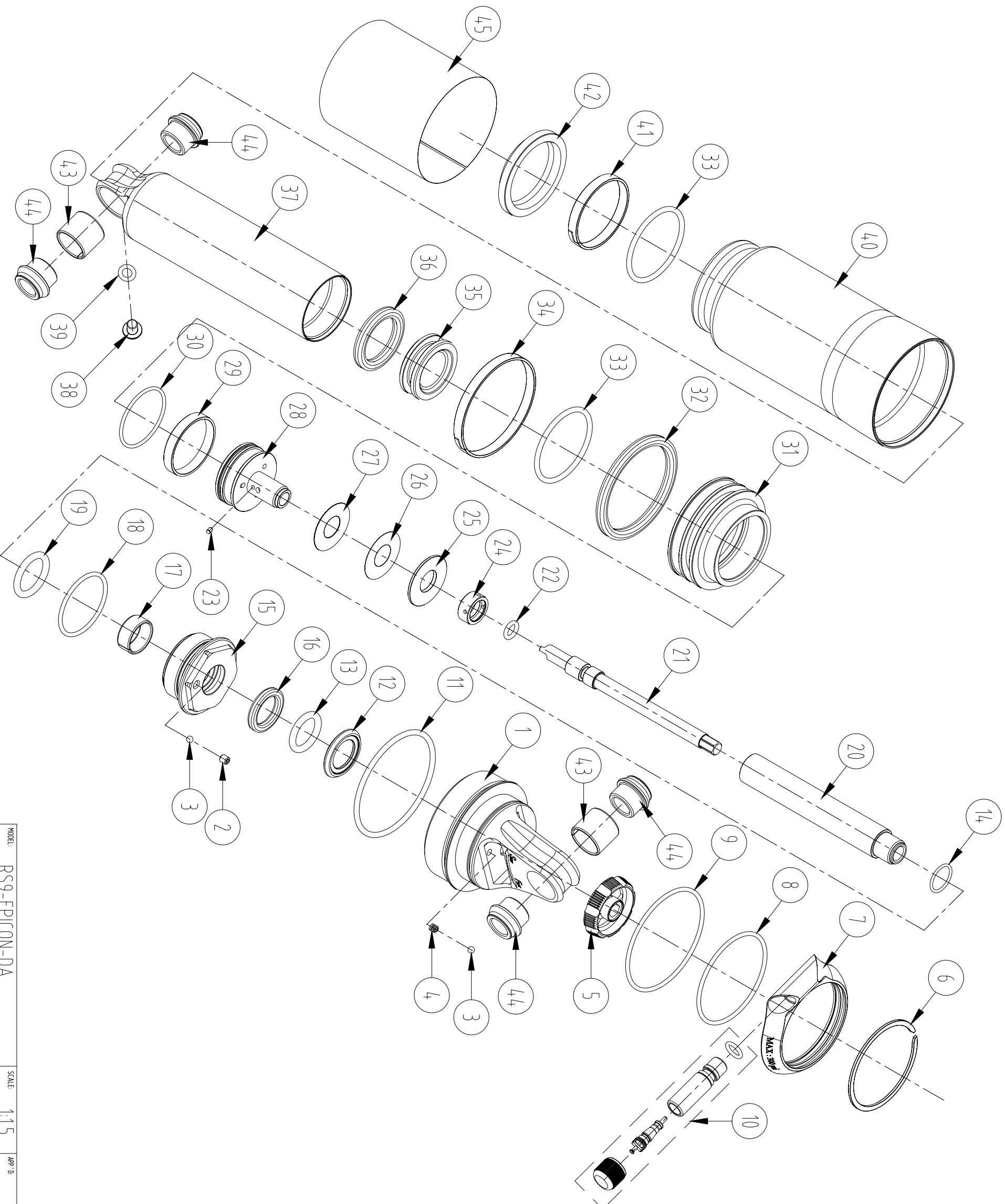


NO.	DESCRIPTION	MATERIAL	QTY
1	TOP	AL-6061	1
2	SCREW	STEEL	1
3	ORIENTATION BALL	STEEL	2
4	ORIENTATION SPRING	STEEL	1
5	REBOUND ADJUSTMENT	AL-6061	1
6	C RING OF AIR VALVE	STEEL	1
7	AIR VALVE RING	AL-6061	1
8	O RING	NBR	1
9	O RING	NBR	1
10	AIR VALVE SET	AL-6061	1
11	O RING	NBR	1
12	BASH PREVENTION WASHER	AL-6061	1
13	O RING	NBR	1
14	O RING	NBR	1
15	OIL SEAL SET	AL-7075	1
16	X RING	NBR	1
17	O RING	NBR	1
18	DU	STEEL	1
19	O RING	NBR	1
20	MAIN SPINDLE	AL-7075	1
21	CONTROL ROD	AL-6061	1
22	O RING	NBR	1
23	PIN	STEEL	1
24	SPACER	AL-6061	1
25	WASHER OF VALVE	STEEL	1
26	SHIM	STEEL	1
27	SHIM	STEEL	1
28	TOP PISTON	AL-7075	1
29	SUPPORT RING	PTFE	1
30	O RING	NBR	1
31	SPUURT SET	AL-6061	1
32	X RING	NBR	1
33	O RING	NBR	2
34	TEFLON	TEFLON	1
35	FLOATING PISTON	AL-6061	1
36	X RING	NBR	1
37	MAIN BODY	AL-6061	1
38	SCREW	STEEL	1
39	O RING	NBR	1
40	AIR BODY	AL-6061	1
41	TEFLON	TEFLON	1
42	DUST SEAL	NBR	1
43	DU	STEEL	2
44	AL BUSHING	AL-6061	2
45	AL BUSHING	AL-6061	2
46	STICKER		1
47			
48			



MODEL	RS9-EPICON-DA	SCALE	1:1.5	APP'D	
DATE	07.12.01	DRAWN	Shuu		
SFR SINTOUR INC.		DRAWING			