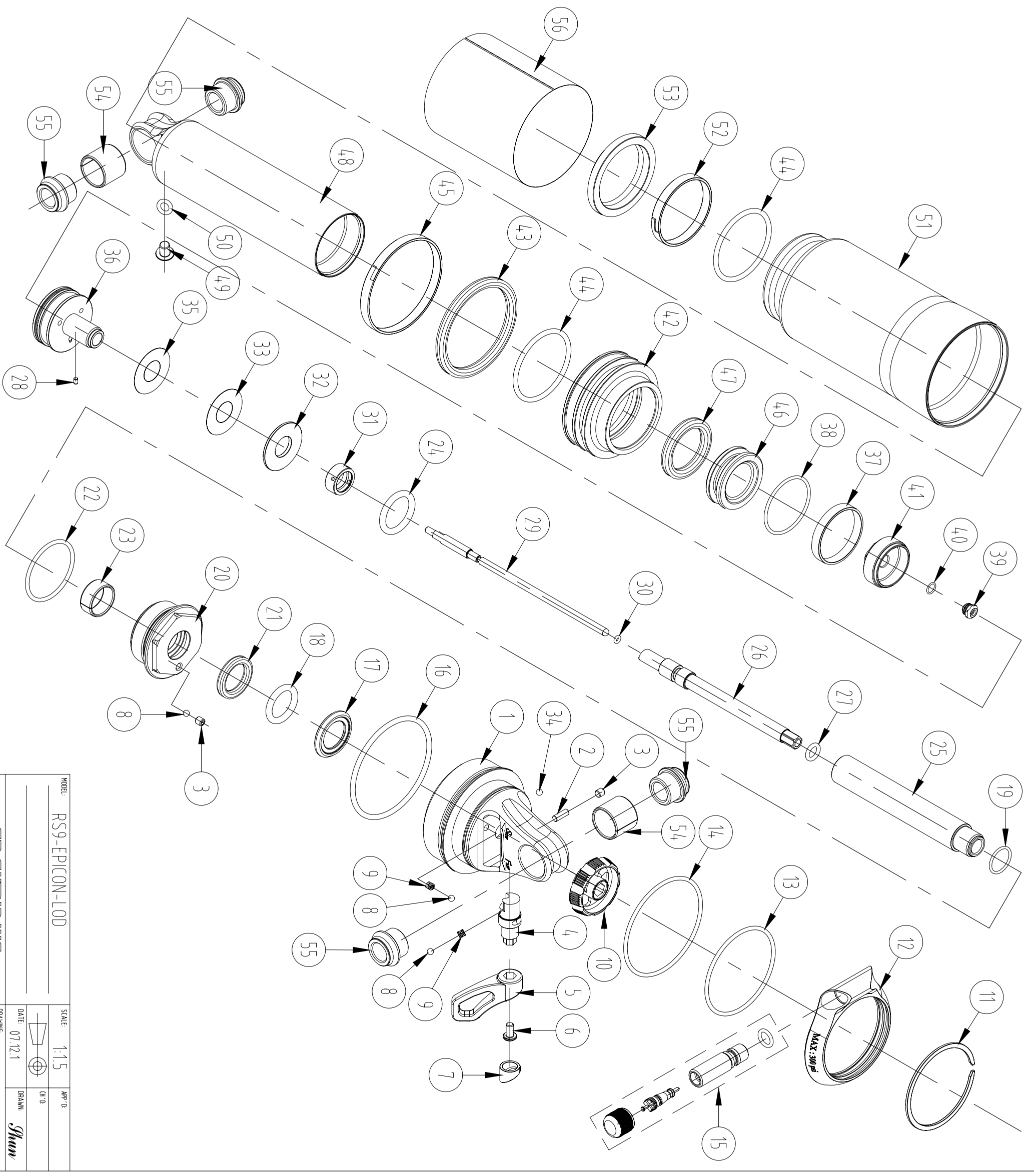


NO.	DESCRIPTION	MATERIAL	QTY
1	TOP	AL-6061	1
2	PIN	STEEL	1
3	SCREW	STEEL	2
4	LOCK OUT ADJUSTING SHAFT	AL-6061	1
5	LOCK OUT ADJUSTING MENT	AL-6061	1
6	SCREW	STEEL	1
7	DUST CAP	NL66#	1
8	ORIENTATION BALL	STEEL	3
9	ORIENTATION SPRING	STEEL	2
10	REBOUND ADJUST MENT	AL-6061	1
11	C RING OF AIR VALVE	STEEL	1
12	AIR VALVE RING	AL-6061	1
13	O RING	NBR	1
14	O RING	NBR	1
15	AIR VALVE SET	AL-6061	1
16	O RING	NBR	1
17	BASH PREVENTION WASHER	AL-6061	1
18	O RING	NBR	1
19	O RING	NBR	1
20	OIL SEAL SET	AL-7075	1
21	X RING	NBR	1
22	O RING	NBR	1
23	DU	STEEL	1
24	O RING	NBR	1
25	MAIN SPINDLE	AL-7075	1
26	CONTROL ROD	AL-6061	1
27	O RING	NBR	1
28	PIN	STEEL	1
29	CONTROL ROD	SCM435	1
30	O RING	NBR	1
31	SPACER	AL-6061	1
32	WASHER OF VALVE	STEEL	1
33	SHIM	STEEL	1
34	ORIENTATION BALL	STEEL	1
35	SHIM	STEEL	1
36	TOP PISTON	AL-7075	1
37	SUPPORT RING	PTFE	1
38	O RING	NBR	1
39	AC CONTROL PISTON	AL-6061	1
40	O RING	NBR	1
41	END PISTON	AL-7075	1
42	SPUORT SET	AL-6061	1
43	X RING	NBR	1
44	O RING	NBR	2
45	TEFLON	TEFLON	1
46	FLOATING PISTON	AL-6061	1
47	X RING	NBR	1
48	MAIN BODY	AL-6061	1
49	SCREW	STEEL	1
50	O RING	NBR	1
51	AIR BODY	AL-6061	1
52	TEFLON	TEFLON	1
53	DUST SEAL	NBR	1
54	DU	STEEL	2
55	AL BUSHING	AL-6061	2
56	AL BUSHING	AL-6061	2
57	STICKER		1
58			



MODEL:	RS9-EPICON-L0D	SCALE:	1:1.5	APP'D:	
DATE:	07.12.1	DRAWING:		DRAWN:	Shuu
SRR SUNTOR INC.					