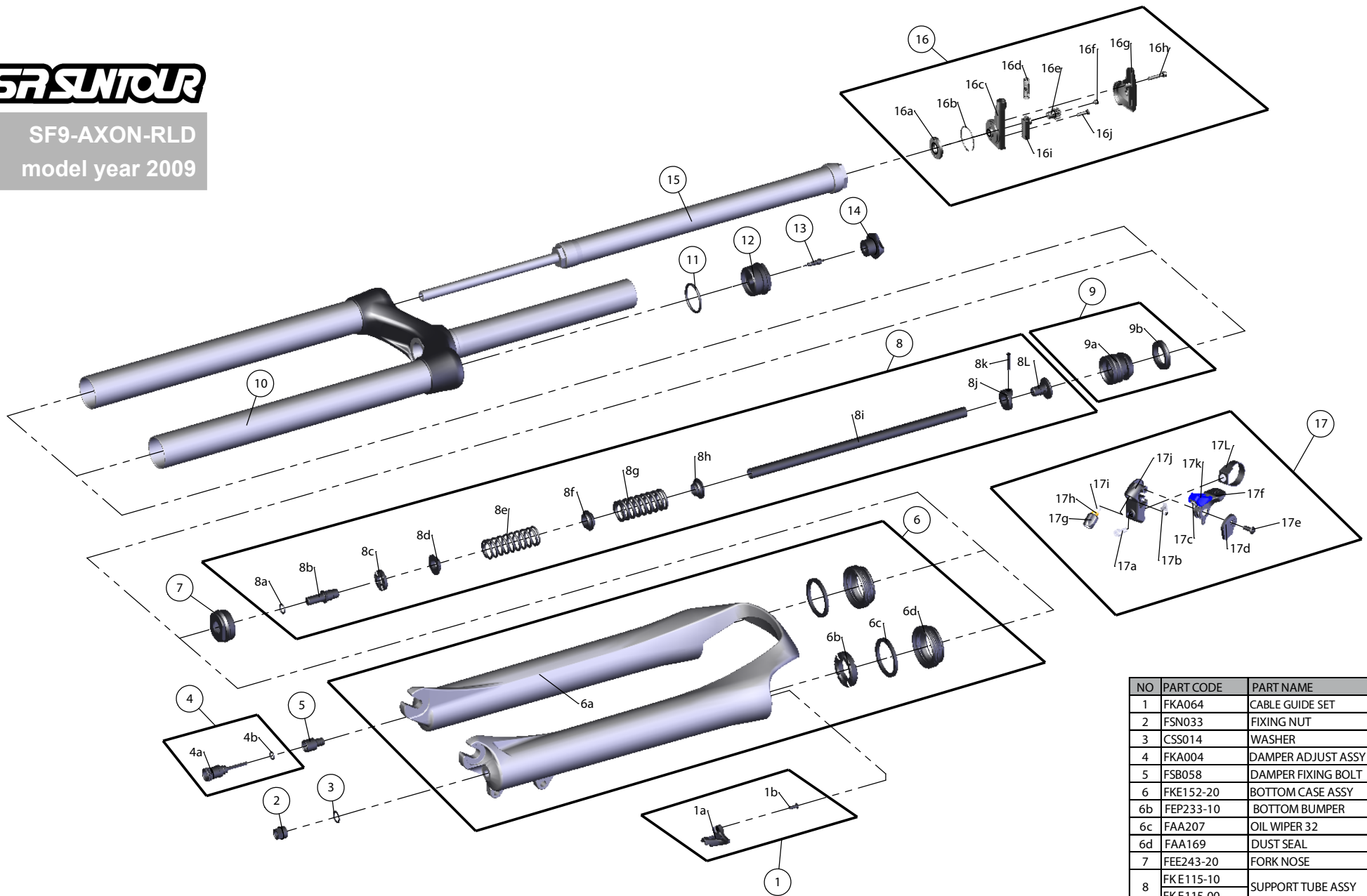


SUNTOUR

SF9-AXON-RLD
model year 2009



| NO | PART CODE | PART NAME | 80 | 100 | QT |
|----|-----------|--------------------|----|-----|----|
| 1 | FKA064 | CABLE GUIDE SET | * | * | 1 |
| 2 | FSN033 | FIXING NUT | * | * | 1 |
| 3 | CSS014 | WASHER | * | * | 1 |
| 4 | FKA004 | DAMPER ADJUST ASSY | * | * | 1 |
| 5 | FSB058 | DAMPER FIXING BOLT | * | * | 1 |
| 6 | FKE152-20 | BOTTOM CASE ASSY | * | * | 1 |
| 6b | FEP233-10 | BOTTOM BUMPER | * | * | 1 |
| 6c | FAA207 | OIL WIPER 32 | * | * | 2 |
| 6d | FAA169 | DUST SEAL | * | * | 2 |
| 7 | FEE243-20 | FORK NOSE | * | * | 1 |
| 8 | FKE115-10 | SUPPORT TUBE ASSY | * | * | 1 |
| | FKE115-00 | | * | * | 1 |
| 9 | FKA022-20 | PISTON UNIT | * | * | 1 |
| 10 | FKE154-22 | UPPER ASSY | * | * | 1 |
| 11 | FAA194 | O RING(P24.8X2.4) | * | * | 1 |
| 12 | FEE429-30 | AIR CAP | * | * | 1 |
| 13 | FAA170 | VALVE CORE | * | * | 1 |
| 14 | FAA121-02 | VALVE CAP | * | * | 1 |
| 15 | FUN021-30 | RLD UNIT | * | * | 1 |
| 16 | FKE112 | RL REMOTE ASSY | * | * | 1 |
| 17 | SL9SC-RLO | REMOTE LEVER ASSY | * | * | 1 |