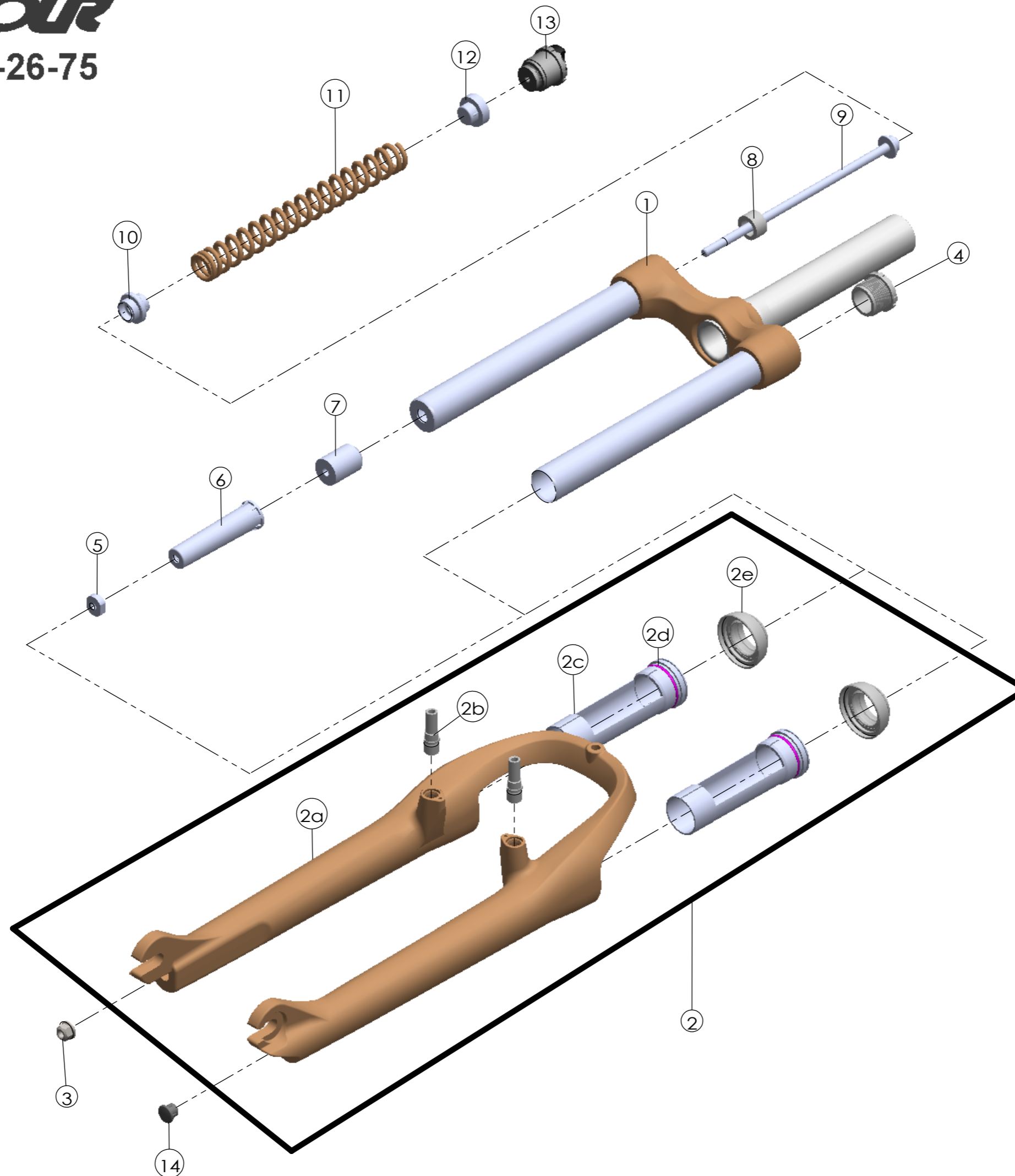


| | | | |
|---------|-----------|---------|---|
| Date | 2012.4.21 | Version | 1 |
| Amended | | | |



| NO. | PART NAME | PART CODE | QTY. |
|-----|-----------------------|-----------|------|
| 1 | UPPER ASSY | FKZ012-02 | 1 |
| 2 | BOTTOM CASE ASSY | FKZ014-10 | 1 |
| 2a | BOTTOM CASE | FPB342 | 1 |
| 2b | CANTI BOSS | FSB241-16 | 2 |
| 2c | SLIDER SLEEVE | FEE475 | 2 |
| 2d | DUST SEAL | FAA188 | 2 |
| 2e | DUST BOOTS | FAA123 | 2 |
| 3 | FIXING NUT | FSN023 | 1 |
| 4 | CAP | FEE675 | 1 |
| 5 | NUT PLATE | FSN025 | 1 |
| 6 | BOTTOM STOPPER | FEE451 | 1 |
| 7 | DAMPER | FEP065-01 | 1 |
| 8 | REBOUND RUBBER | FEP066 | 1 |
| 9 | FIXING BOLT | FSB159-06 | 1 |
| 10 | SPRING GUIDE LOWER | FEE385-40 | 1 |
| 11 | MAIN SPRING | FEP680 | 1 |
| 12 | SPRING GUIDE UPPER | FEE196-20 | 1 |
| 13 | CONTROL ADJUST SYSTEM | FKE007-11 | 1 |
| 14 | BOTTOM CASE | FEE795 | 1 |