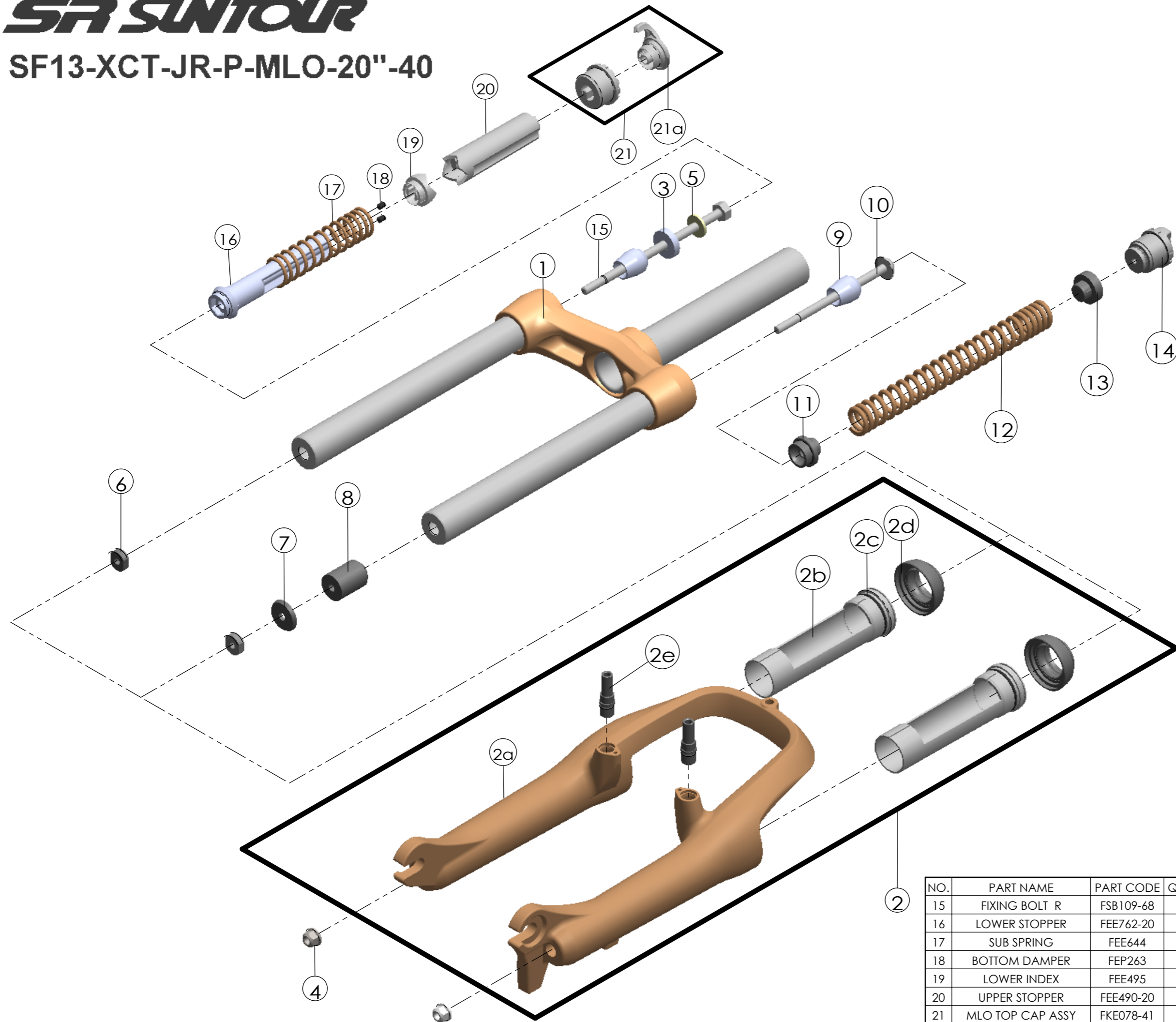


SF SUNTOUR

SF13-XCT-JR-P-MLO-20"-40

Date	2013.10.8	Version	1
Amended			



NO.	PART NAME	PART CODE	QTY.
1	UPPER ASSY	FKZ025-02	1
2	BOTTOM CASE ASSY	FKZ026-10	1
2a	BOTTOM CASE	FPB339	1
2b	SLIDER SLEEVE	FEE266-01	2
2c	O RING	FAA188	2
2d	DUST SEAL	FAA123	2
2e	CANTI BOSS	FSB241-16	2
3	WASHER	FEE881	1
4	FIXING NUT	FSN023	2
5	WASHER	FSW003	1
6	NUT PLATE	FSN025	2
7	BOTTOM STOPPER	FEE465	1
8	DAMPER	FEP065-01	1
9	REBOUND RUBBER	FEP086-10	2
10	FIXING BOLT L	FSB155-01	1
11	SPRING GUIDE LOWER	FEE385-50	1
12	MAIN SPRING	FEP676	1
13	SPRING GUIDE UPPER	FEE196-10	1
14	CONTROL ADJUST SYSTEM	FKE007-11	1
15	FIXING BOLT R	FSB109-68	1
16	LOWER STOPPER	FEE762-20	1
17	SUB SPRING	FEE644	1
18	BOTTOM DAMPER	FEP263	2
19	LOWER INDEX	FEE495	1
20	UPPER STOPPER	FEE490-20	1
21	MLO TOP CAP ASSY	FKE078-41	1
21a	MLO KNOB	FEE493-10	1

NO.	PART NAME	PART CODE	QTY.
1	UPPER ASSY	FKZ025-02	1
2	BOTTOM CASE ASSY	FKZ026-10	1
2a	BOTTOM CASE	FPB339	1
2b	SLIDER SLEEVE	FEE266-01	2
2c	O RING	FAA188	2
2d	DUST SEAL	FAA123	2
2e	CANTI BOSS	FSB241-16	2
3	WASHER	FEE881	1
4	FIXING NUT	FSN023	2
5	WASHER	FSW003	1
6	NUT PLATE	FSN025	2
7	BOTTOM STOPPER	FEE465	1
8	DAMPER	FEP065-01	1
9	REBOUND RUBBER	FEP086-10	2
10	FIXING BOLT L	FSB155-01	1
11	SPRING GUIDE LOWER	FEE385-50	1
12	MAIN SPRING	FEP676	1
13	SPRING GUIDE UPPER	FEE196-10	1
14	CONTROL ADJUST SYSTEM	FKE007-11	1