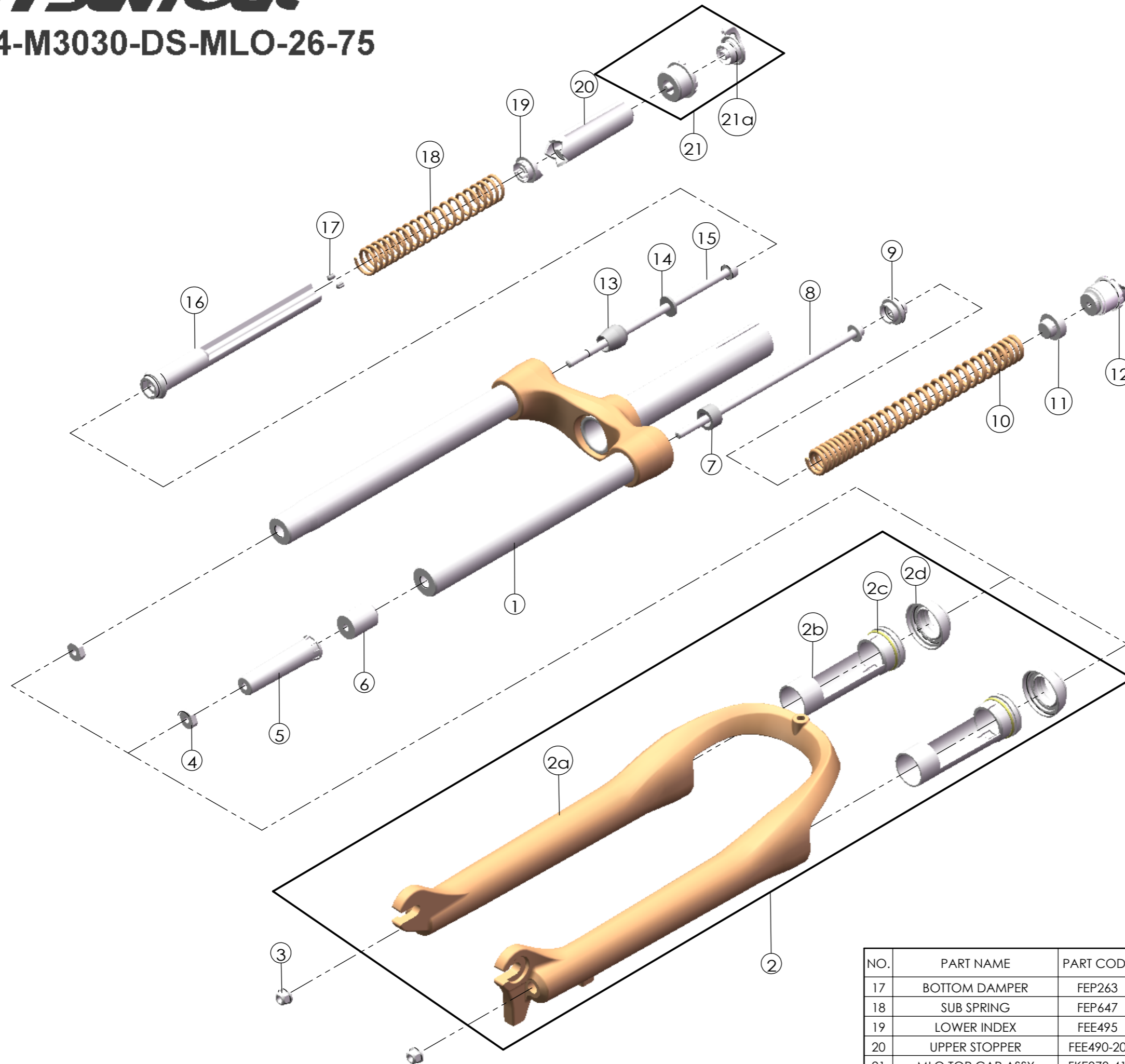


Date	2013.1.3	Version	1
Amended			



NO.	PART NAME	PART CODE	QTY.
1	UPPER ASSY	FKZ027-01	1
2	BOTTOM CASE ASSY	FKZ028-10	1
2a	BOTTOM CASE	FPB356	1
2b	SLIDER SLEEVE	FEE475	2
2c	O RING	FAA188	2
2d	DUST SEAL	FAA123	2
3	FIXING NUT	FSN023	2
4	NUT PLATE	FSN025	1
5	BOTTOM STOPPER	FEE451	1
6	DAMPER	FEP065-01	1
7	REBOUND RUBBER	FEP066	1
8	FIXING BOLT L	FSB159-06	1
9	SPRING GUIDE	FEE385-40	1
10	MAIN SPRING	FEP684	1
11	SPRING GUIDE	FEE196-20	1
12	ADJUSTER ASSY	FKE007-11	1
13	REBOUND RUBBER	FEP086-10	1
14	WASHER	FSW003	1
15	FIXING BOLT R	FSB109-71	1
16	LOWER STOPPER	FEE762-11	1
17	BOTTOM DAMPER	FEP263	2
18	SUB SPRING	FEP647	1
19	LOWER INDEX	FEE495	1
20	UPPER STOPPER	FEE490-20	1
21	MLO TOP CAP ASSY	FKE078-41	1
21a	MLO KNOB	FEE493-10	1

NO.	PART NAME	PART CODE	QTY.
17	BOTTOM DAMPER	FEP263	2
18	SUB SPRING	FEP647	1
19	LOWER INDEX	FEE495	1
20	UPPER STOPPER	FEE490-20	1
21	MLO TOP CAP ASSY	FKE078-41	1
21a	MLO KNOB	FEE493-10	1