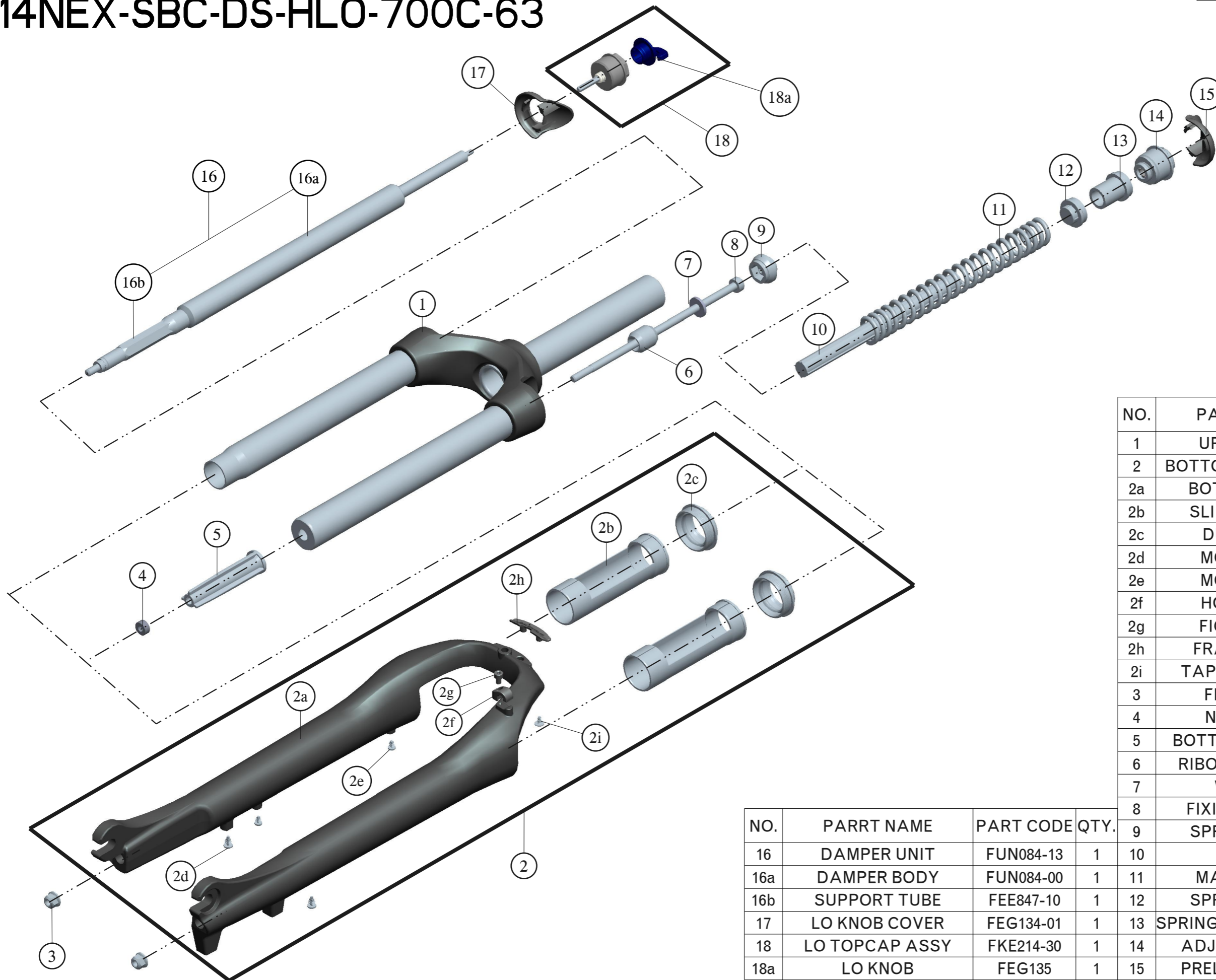


Date	2014.7.31	Version	2
Amended	2016.2.16		



NO.	PARRT NAME	PART CODE	QTY.
1	UPPER ASSY	FKZ024-03	1
2	BOTTOM CASE ASSY	FKZ032-10	1
2a	BOTTOM CASE	FPB322	1
2b	SLIDER SLEEVE	FEE942	2
2c	DUST SEAL	FAA125-40	2
2d	MOUNT CAP	FAA199	2
2e	MOUNT CAP	FAA199-10	2
2f	HOSE GUIDE	FEE797	1
2g	FICING BOLT	FSB153	1
2h	FRACE COVER	FEE716	1
2i	TAPPING SCREW	FSB114-20	2
3	FIXING NUT	FSN023	2
4	NRT PLATE	FSN025-10	1
5	BOTTOM STOPPER	FEG178	1
6	RIBOUND RUBBER	FEP086-10	1
7	WASHER	FSW003	1
8	FIXING BOLTL L	FSB159-06	1
9	SPRING GUIDE	FEE468-10	1
10	DAMPER	FEP262-50	1
11	MAIN SPRING	FEP450	1
12	SPRING GUIDE	FEE467-10	1
13	SPRING GUIDE SPACER	FEG033	1
14	ADJUST SYSTEM	FKE213-00	1
15	PRELOAD COVER	FEG113-01	1
16	DAMPER UNIT	FUN084-13	1
16a	DAMPER BODY	FUN084-00	1
16b	SUPPORT TUBE	FEE847-10	1
17	LO KNOB COVER	FEG134-01	1
18	LO TOPCAP ASSY	FKE214-30	1
18a	LO KNOB	FEG135	1

NO.	PARRT NAME	PART CODE	QTY.
16	DAMPER UNIT	FUN084-13	1
16a	DAMPER BODY	FUN084-00	1
16b	SUPPORT TUBE	FEE847-10	1
17	LO KNOB COVER	FEG134-01	1
18	LO TOPCAP ASSY	FKE214-30	1
18a	LO KNOB	FEG135	1