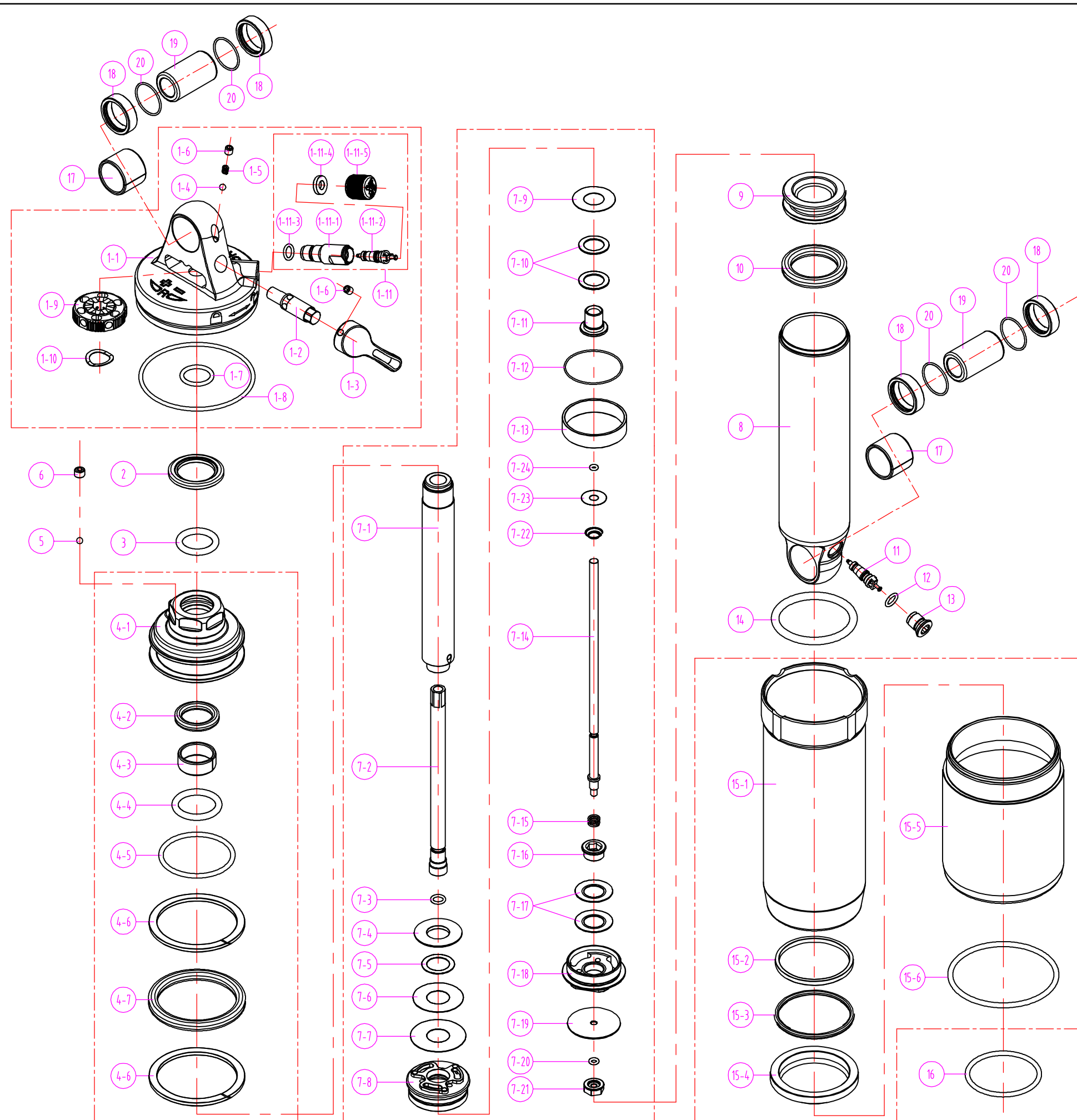


SR SUNTOUR

RS16-DUAIR LO-R / LO-R8

200-57

Date	2015.06.18	Version	1
Amended			



20	O RING	RAA081	4	4	4	4	4	4	4	4	
19	AL BUSHING	REE089	1	1	1	1	1	1	1	1	
		REE089	1	1	1	1	1	1	1	1	
		REE088	1	1	1	1	1	1	1	1	
		REE088	1	1	1	1	1	1	1	1	
18	AL BUSHING	RAA080	2	2	2	2	2	2	2	2	
		RAA080	2	2	2	2	2	2	2	2	
17	DU	REE074	2	2	2	2	2	2	2	2	
16	O RING	RAA100	1	1	1	1	1	1	1	1	
15	GAS CYLINDER ASSEMBLY	RBA216-20XL								1	1
		RBA216-20L						1	1		
		RBA216-20M			1	1					
		RBA216-20S	1	1							
14	O RING	FAA352	1	1	1	1	1	1	1	1	
13	AIR CAP	RAA102	1	1	1	1	1	1	1	1	
12	O RING	FAA140	1	1	1	1	1	1	1	1	
11	AIR VALVE	FAA170	1	1	1	1	1	1	1	1	
10	X RING	RAA046	1	1	1	1	1	1	1	1	
9	FLOATING PISTON	REE066	1	1	1	1	1	1	1	1	
8	MAIN BODY	RLB069-3	1	1	1	1	1	1	1	1	
7	MAIN SPINDLE ASSEMBLY	RBA203-20-R8			1	1			1	1	
		RBA203-20	1		1		1		1	1	
6	SCREW	PSB103	1	1	1	1	1	1	1	1	
5	STEEL BALL	DSO001	1	1	1	1	1	1	1	1	
4	SUPPORT SET ASSEMBLY	RBA201	1	1	1	1	1	1	1	1	
3	O RING	RAA052	1	1	1	1	1	1	1	1	
2	WASHER	RSW073	1	1	1	1	1	1	1	1	
1	TOP ASSEMBLY	RBA200	1	1	1	1	1	1	1	1	
NO.	DESCRIPTION	SR CODE	LO-R S	LO-R8 S	LO-R M	LO-R8 M	LO-R L	LO-R8 L	LO-R XL	LO-R8 XL	