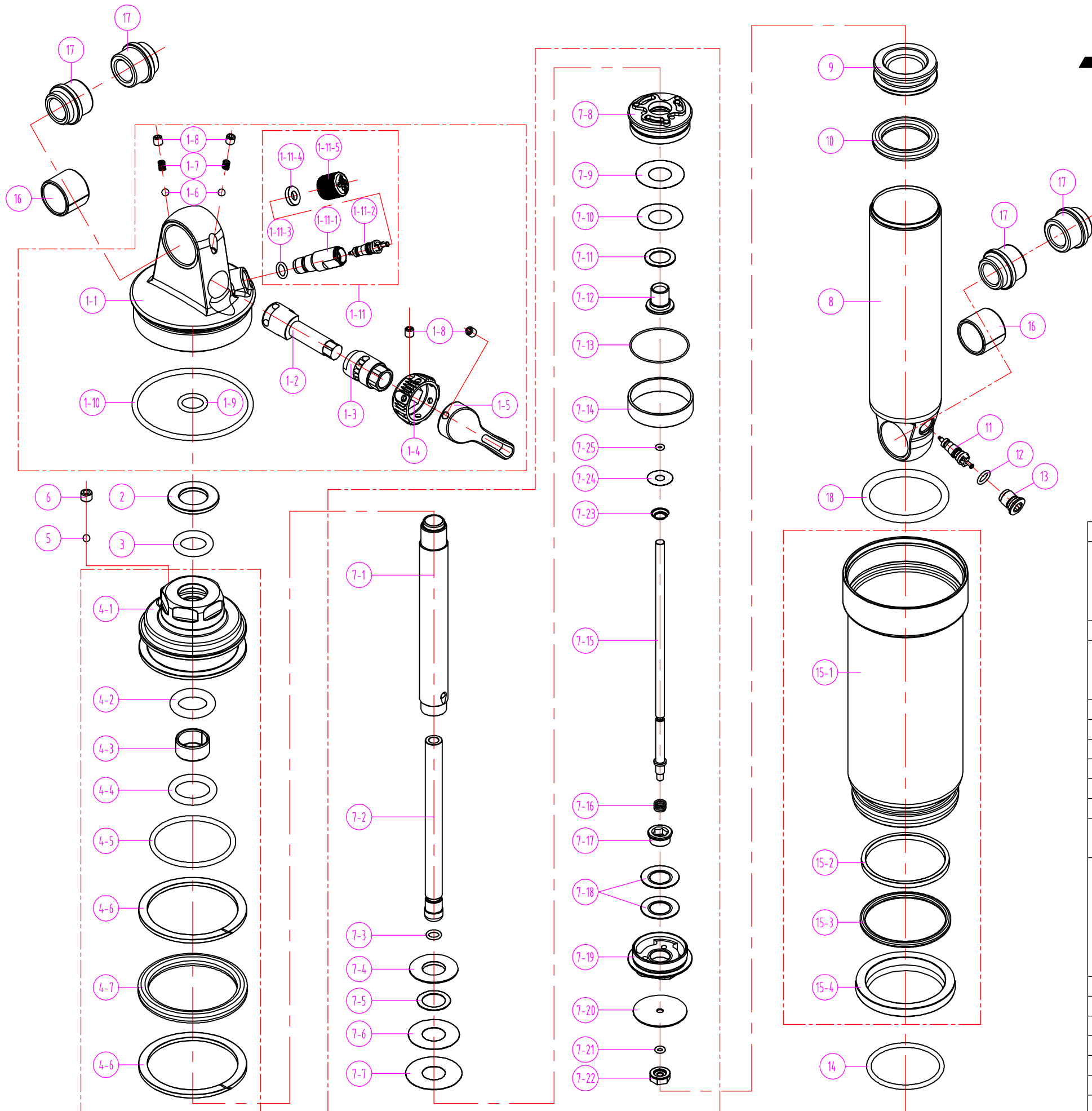


SR SUNTOUR

RS16-UNAIR LOR / LOR8

190-51 / 184-44 / 165-38

Date	2015.06.18	Version	1
Amended			



18	O RING	FAA352	1	1	1	1	1	1	1
17	AL BUSHING	RAA073	2	2	2	2	2	2	2
		RAA072	2	2	2	2	2	2	2
16	DU	REE074	2	2	2	2	2	2	2
15	CAS CYLINDER ASSEMBLY	RBA104-50						1	1
		RBA104-40			1	1			
		RBA104-30	1	1					
14	O RING	RAA100	1	1	1	1	1	1	1
13	AIR CAP	RAA102	1	1	1	1	1	1	1
12	O RING	FAA140	1	1	1	1	1	1	1
11	AIR VALVE	FAA170	1	1	1	1	1	1	1
10	X RING	RAA046	1	1	1	1	1	1	1
9	FLOATING PISTON	REE066	1	1	1	1	1	1	1
8	MAIN BODY	RLB069-5						1	1
		RLB069-4	1	1	1	1			
7	MAIN SPINDLE ASSEMBLY	RBA102-50-R8							1
		RBA102-50						1	
		RBA102-40-R8				1			
		RBA102-40			1				
		RBA102-30-R8	1						
		RBA102-30	1						
6	SCREW	PSB103	1	1	1	1	1	1	1
5	STEEL BALL	DS0001	1	1	1	1	1	1	1
4	SUPPORT SET ASSEMBLY	RBA101	1	1	1	1	1	1	1
3	O RING	RAA074	1	1	1	1	1	1	1
2	WASHER	RSW072	1	1	1	1	1	1	1
1	TOP ASSEMBLY	RBA100	1	1	1	1	1	1	1
NO.	DESCRIPTION	SR CODE	190-51 LO-R	190-51 LO-R8	184-44 LO-R	184-44 LO-R8	165-38 LO-R	165-38 LO-R8	