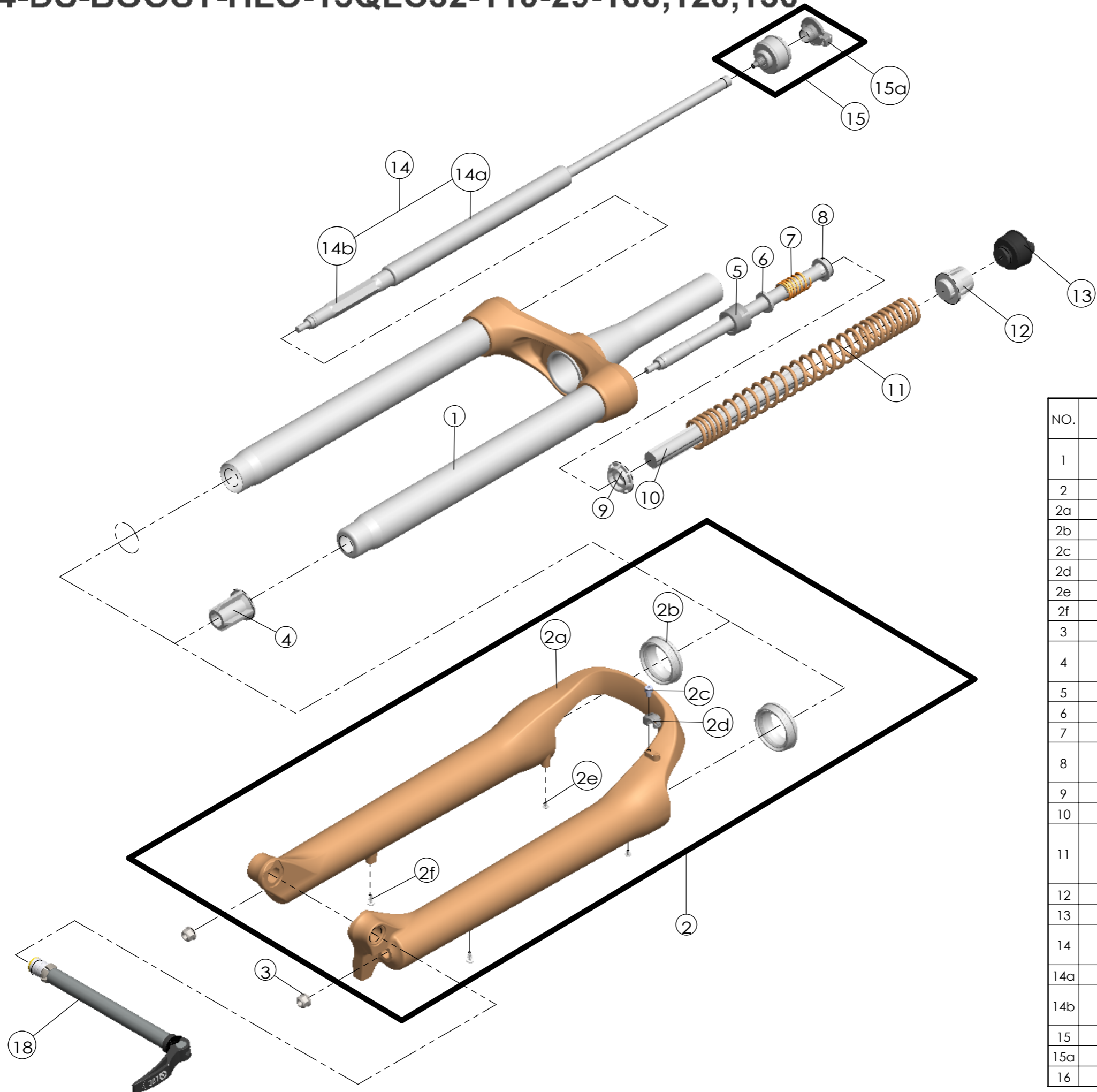


| | | | |
|---------|-----------|---------|---|
| Date | 2017.9.26 | Version | 2 |
| Amended | 2018.12.3 | | |



| NO. | PART NAME | PART CODE | QTY. | | |
|-----|----------------------|-----------|------|-----|-----|
| | | | 100 | 120 | 130 |
| 1 | UPPER ASSY | FKZ103-04 | 1 | - | - |
| | | FKZ103-03 | - | 1 | 1 |
| 2 | BOTTOM CASE ASSY | FKZ105-10 | 1 | 1 | 1 |
| 2a | BOTTOM CASE | FPB455 | 1 | 1 | 1 |
| 2b | DUST SEAL | FAA390-20 | 2 | 2 | 2 |
| 2c | HOSE GUIDE | FEG166 | 1 | 1 | 1 |
| 2d | BOLT | FSB153 | 1 | 1 | 1 |
| 2e | MOUNT CAP | FAA199-10 | 2 | 2 | 2 |
| 2f | MOUNT CAP | FAA199 | 2 | 2 | 2 |
| 3 | FIXING NUT | FSN023 | 2 | 2 | 2 |
| 4 | BOTTOM STOPPER | FEE806-40 | 1 | - | - |
| | | FEE806-60 | - | 1 | 1 |
| 5 | FORK NOSE | FEE805-20 | 1 | 1 | 1 |
| 6 | REBOUND RUBBER | FEP053 | 1 | 1 | 1 |
| 7 | REBOUND SPRING | FEP189-20 | 1 | 1 | 1 |
| 8 | SUPPOR TUBE | FEG175 | 1 | 1 | - |
| | | FEG454 | - | - | 1 |
| 9 | SPRING GUIDE LOWER | FEG456 | 1 | 1 | 1 |
| 10 | DAMPER | FEP781 | 1 | 1 | 1 |
| 11 | MAIN SPRING | FEP799 | 1 | - | - |
| | | FEP798 | - | 1 | - |
| | | FEP797 | - | - | 1 |
| 12 | SPRING GUIDE UPPER | FEG455 | 1 | 1 | 1 |
| 13 | ADJUST SYSTEM | FKE009-31 | 1 | 1 | 1 |
| 14 | DAMPER UNIT | FUN050-42 | 1 | - | - |
| | | FUN050-43 | - | 1 | 1 |
| 14a | DAMPER BODY | FUN050-40 | 1 | 1 | 1 |
| 14b | SUPPORT TUBE | FEE847-02 | 1 | - | - |
| | | FEE847-04 | - | 1 | 1 |
| 15 | LO ADJUST SYSTEM | FKE028-58 | 1 | 1 | 1 |
| 15a | LO KNOB | FEG426 | 1 | 1 | 1 |
| 16 | 15QLC32-110 AXLE SET | FKA069-25 | 1 | 1 | 1 |