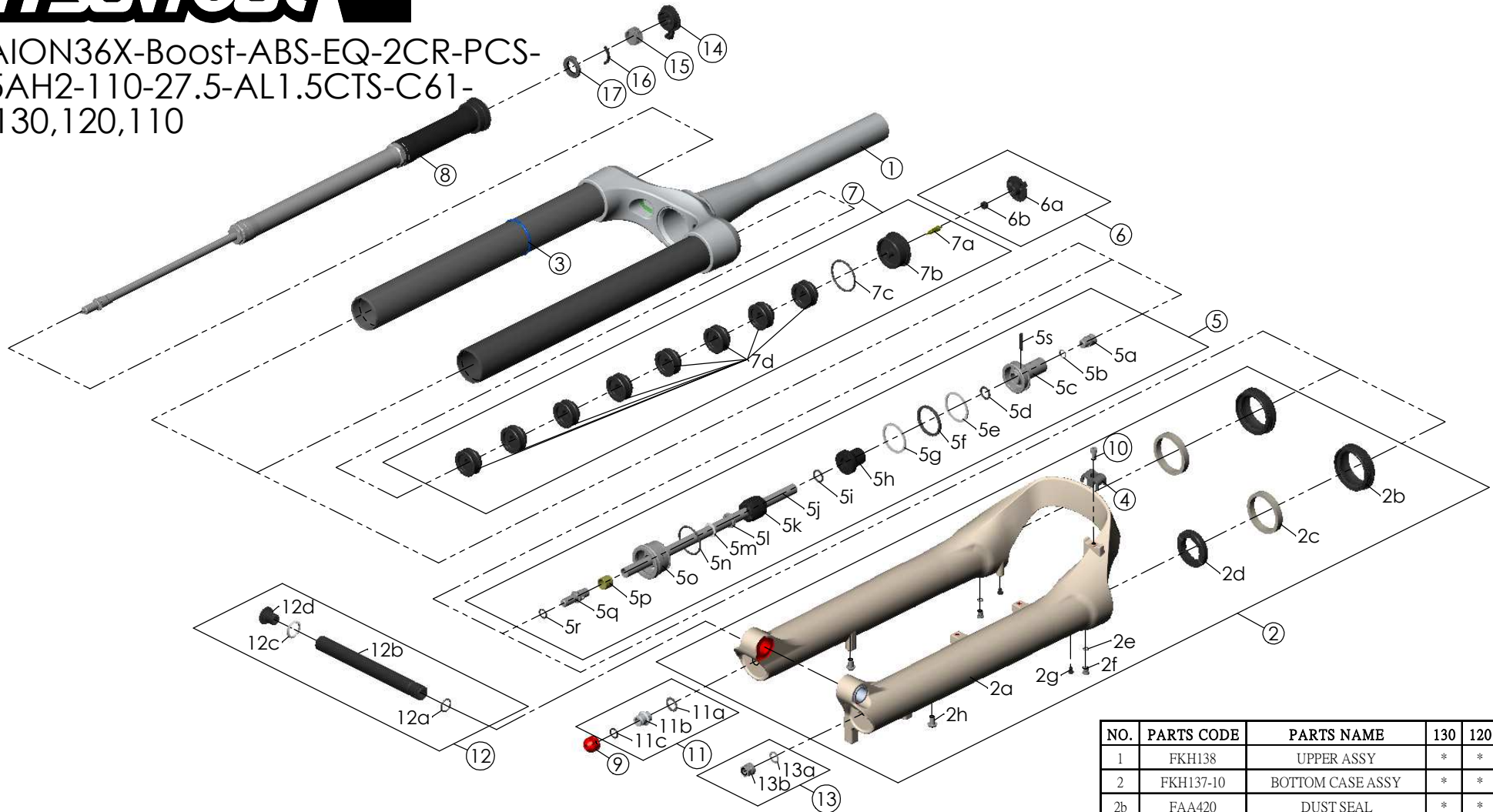


SF25AION36X-Boost-ABS-EQ-2CR-PCS-
DS-15AH2-110-27.5-AL1.5CTS-C61-
O44-130,120,110



| NO. | PARTS CODE | PARTS NAME | 130 | 120 | 110 | QT |
|-----|------------|--------------------|-----|-----|-----|----|
| 11 | FKE436 | FIXING NUT SET | * | * | * | 1 |
| 12 | FKA117-00 | 15AH2-110 AXLE SET | * | * | * | 1 |
| 13 | FKA063-03 | FIXING NUT SET | * | * | * | 1 |
| 14 | FKE590-01 | 2CR KNOB ASSY | * | * | * | 1 |
| 15 | FEE256-10 | ADJUST CORE | * | * | * | 1 |
| 16 | FEE258 | ADJUST CLICK | * | * | * | 1 |
| 17 | FEE257 | CLICK HOLDER | * | * | * | 1 |

| NO. | PARTS CODE | PARTS NAME | 130 | 120 | 110 | QT |
|-----|------------|-------------------|-----|-----|-----|----|
| 6 | FKE595 | VALVE CAP ASSY | * | * | * | 1 |
| 7 | FKE594-32 | AIR CAP ASSY | * | | | 1 |
| | FKE594-42 | | | * | | 1 |
| | FKE594-52 | | | | * | 1 |
| 7d | FEG270 | VOLUME REDUCER | * | | | 8 |
| | FEG270 | | | * | | 9 |
| | FEG270 | | | | * | 10 |
| 8 | FUN171-75 | 2CR-PCS UNIT | * | * | * | 1 |
| 9 | FEG201 | REBOUND KNOB | * | * | * | 1 |
| 10 | FSB513 | GUIDE FIXING BOLT | * | * | * | 1 |

| NO. | PARTS CODE | PARTS NAME | 130 | 120 | 110 | QT |
|-----|------------|-----------------------|-----|-----|-----|----|
| 1 | FKH138 | UPPER ASSY | * | * | * | 1 |
| 2 | FKH137-10 | BOTTOM CASE ASSY | * | * | * | 1 |
| 2b | FAA420 | DUST SEAL | * | * | * | 2 |
| 2c | FAA421-10 | OIL WIPER | * | * | * | 2 |
| 2d | FEP233-20 | BOTTOM BUMPER | * | * | * | 1 |
| 2e | FAA270 | O RING | * | * | * | 2 |
| 2f | FSB188 | SEAL SCREW | * | * | * | 2 |
| 2g | FAA200-10 | MOUNT CAP | * | * | * | 2 |
| 2h | FSB203 | FIXING BOLT | * | * | * | 2 |
| 3 | FEG397-40 | O RING | * | * | * | 1 |
| 4 | FEG519 | CABLE CLIP | * | * | * | 1 |
| 5 | FKE587-02 | SUPPORT TUBE ASSY-130 | * | | | 1 |
| | FKE587-12 | SUPPORT TUBE ASSY-120 | | * | | 1 |
| | FKE587-22 | SUPPORT TUBE ASSY-110 | | | * | 1 |