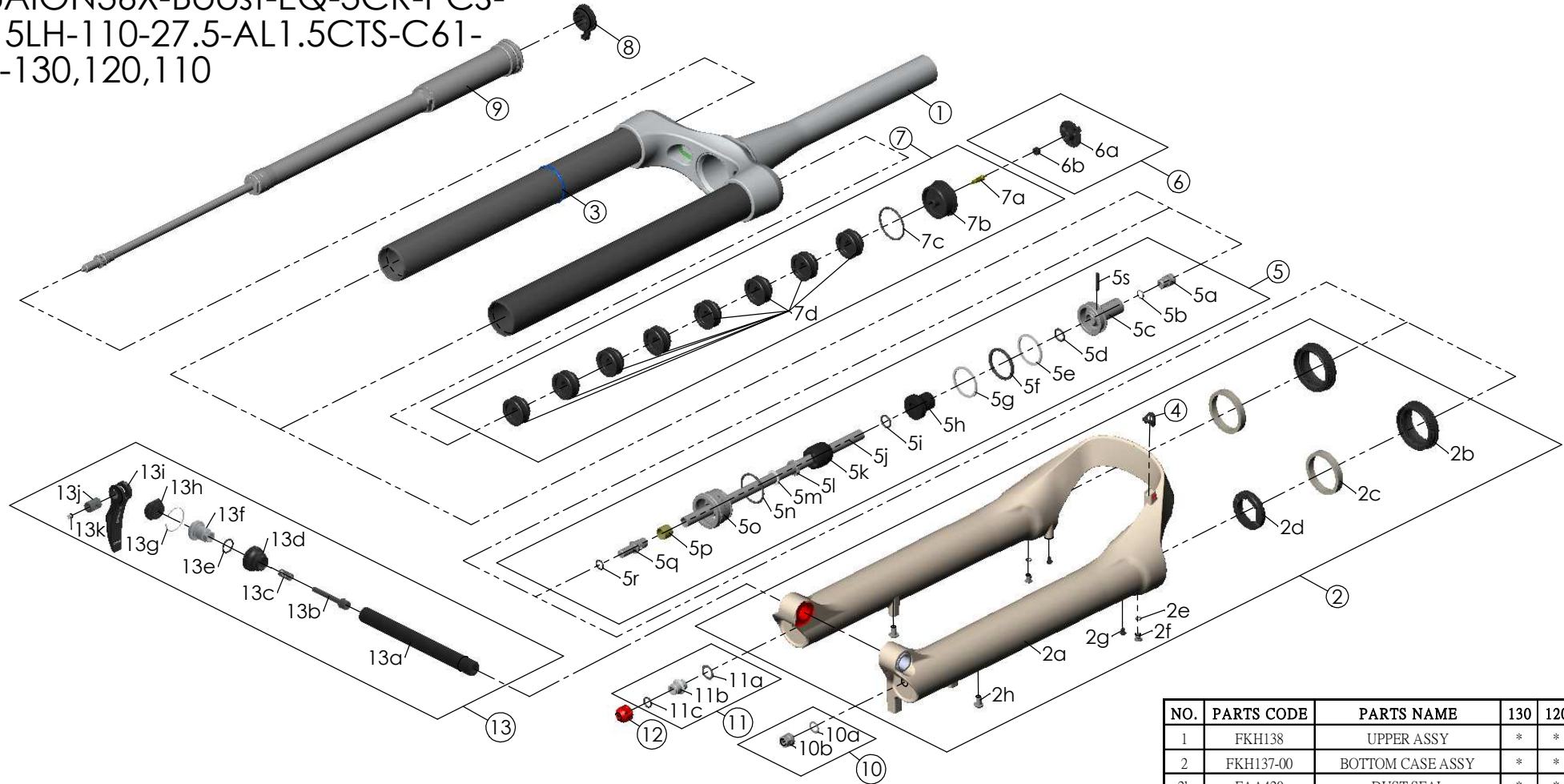


SF25AION36X-Boost-EQ-3CR-PCS-
DS-15LH-110-27.5-AL1.5CTS-C61-
O44-130,120,110



| NO. | PARTS CODE | PARTS NAME | 130 | 120 | 110 | QT |
|-----|------------|-------------------|-----|-----|-----|----|
| 11 | FKE436 | FIXING NUT SET | * | * | * | 1 |
| 12 | FEG201 | REBOUND KNOB | * | * | * | 1 |
| 13 | FKA116-02 | 15LH-110 AXLE SET | * | * | * | 1 |

| NO. | PARTS CODE | PARTS NAME | 130 | 120 | 110 | QT |
|-----|------------|----------------|-----|-----|-----|----|
| 6 | FKE595 | VALVE CAP ASSY | * | * | * | 1 |
| 7 | FKE594-32 | AIR CAP ASSY | * | | | 1 |
| | FKE594-42 | | | * | | 1 |
| | FKE594-52 | | | | * | 1 |
| 7d | FEG270 | VOLUME REDUCER | * | | | 8 |
| | FEG270 | | | * | | 9 |
| | FEG270 | | | | * | 10 |
| 8 | FKE590-00 | 3CR KNOB ASSY | * | * | * | 1 |
| 9 | FUN210-25 | 3CR-PCS UNIT | * | * | * | 1 |
| 10 | FKA063-03 | FIXING NUT SET | * | * | * | 1 |

| NO. | PARTS CODE | PARTS NAME | 130 | 120 | 110 | QT |
|-----|------------|-----------------------|-----|-----|-----|----|
| 1 | FKH138 | UPPER ASSY | * | * | * | 1 |
| 2 | FKH137-00 | BOTTOM CASE ASSY | * | * | * | 1 |
| 2b | FAA420 | DUST SEAL | * | * | * | 2 |
| 2c | FAA421-10 | OIL WIPER | * | * | * | 2 |
| 2d | FEP233-20 | BOTTOM BUMPER | * | * | * | 1 |
| 2e | FAA270 | O RING | * | * | * | 2 |
| 2f | FSB188 | SEAL SCREW | * | * | * | 2 |
| 2g | FAA200-10 | MOUNT CAP | * | * | * | 2 |
| 2h | FSB203 | FIXING BOLT | * | * | * | 2 |
| 3 | FEG397-40 | O RING | * | * | * | 1 |
| 4 | FEG034 | CABLE CLIP | * | * | * | 1 |
| 5 | FKE587-02 | SUPPORT TUBE ASSY-130 | * | | | 1 |
| | FKE587-12 | SUPPORT TUBE ASSY-120 | | * | | 1 |
| | FKE587-22 | SUPPORT TUBE ASSY-110 | | | * | 1 |