



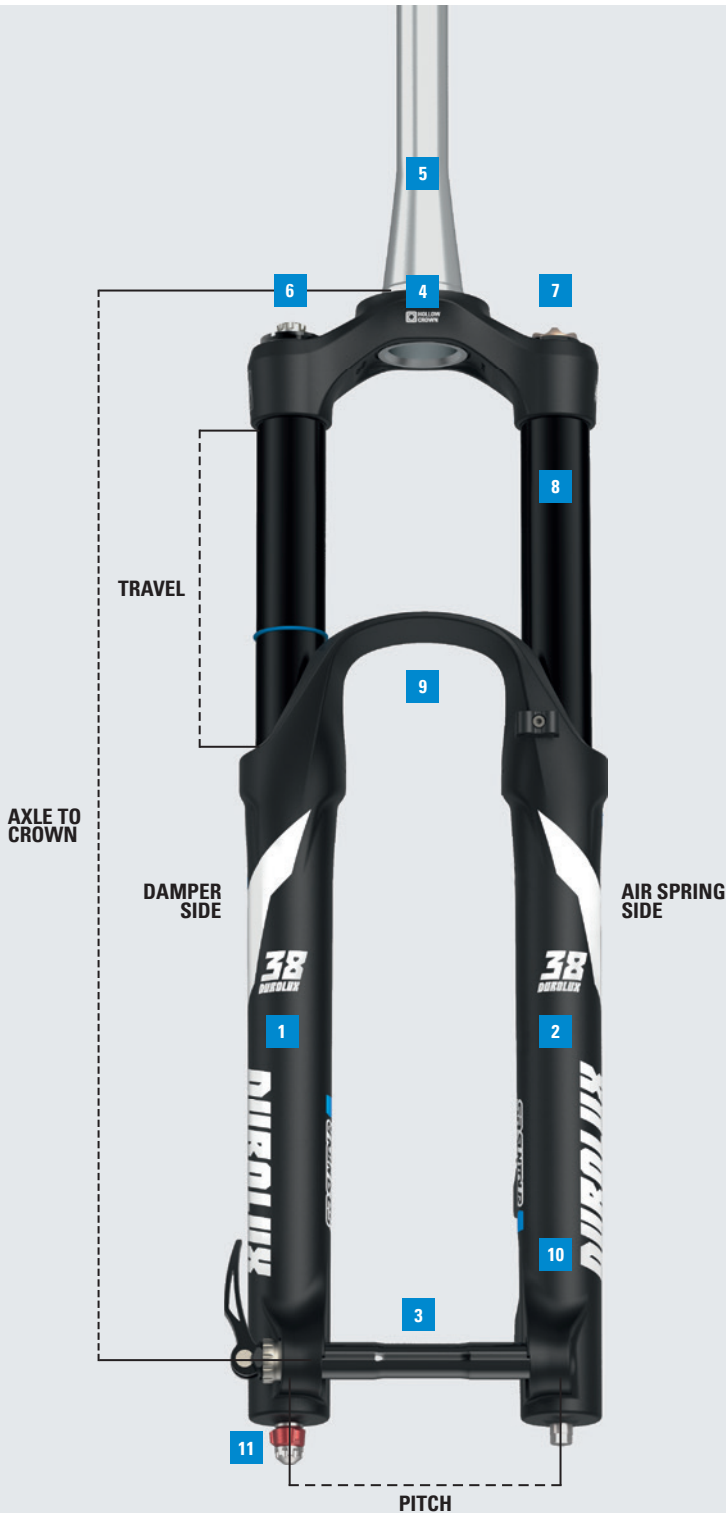
# ***SUSPENSION FORK GLOSSARY***

V.1.0\_08-2025



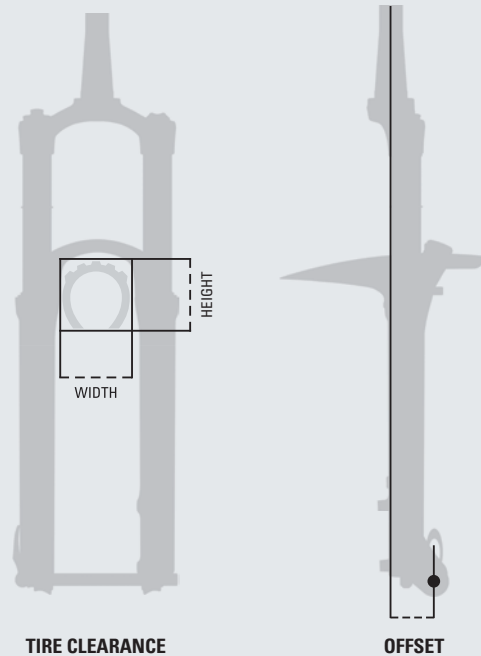
# GLOSSARY SUSPENSION FORK

## OVERVIEW



### KEY TECHNOLOGIES

- 01 PCS PISTON COMPENSATOR SYSTEM**  
MORE TRACTION, CONTROL AND CONSISTENCY
- 02 EQ EQUALIZER SYSTEM**  
FOR PRECISE AND EFFORTLESS TUNING
- 03 Q-LOC AND THRU AXLE SYSTEMS**  
QUICK RELEASE FOR THRU AXLES
- 04 HOLLOW CROWN**  
LIGHTWEIGHT FORGED HOLLOW AND ULTRA-LIGHTWEIGHT CARBON CROWN TECHNOLOGY
- 05 STEERER TUBE**
- 06 COMPRESSION KNOB / LOCK OUT KNOB**  
PRELOAD ADJUSTER (NON-DAMPER MODELS)
- 07 AIR VALVE AIR VOLUME ADJUST (AIR MODEL)**  
PRELOAD ADJUSTER (COIL MODEL)
- 08 STANCHION TUBE**
- 09 TIRE CLEARANCE**
- 10 BOTTOM CASE / LOWER LEG**
- 11 REBOUND KNOB**



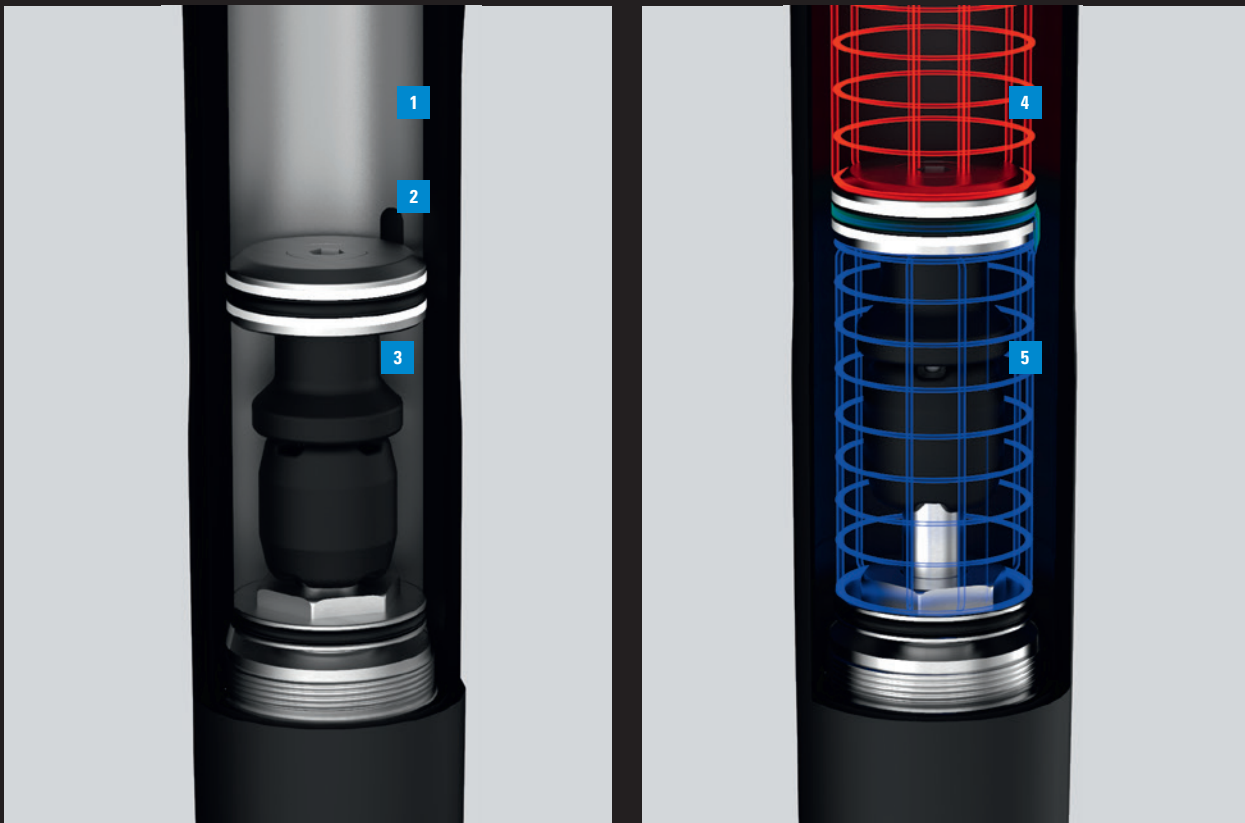
# ***EQ EQUALIZER SYSTEM***

***FOR PRECISE & EFFORTLESS AIR SPRING TUNING***



**WATCH THE  
DUROLUX EQ  
VIDEO**

LEARN MORE AT [WWW.SRSUNTOUR.COM/EQ](http://WWW.SRSUNTOUR.COM/EQ)



- 1 Positive air chamber
- 2 Transfer port
- 3 Negative air Chamber
- 4 Positive air pressure
- 5 Negative air pressure

### SET YOUR SAG AND THE EQUALIZER (EQ) AIR NEGATIVE SPRING SYSTEM WILL BALANCE IT FOR YOU.

Our tradition of product evolution brings our forks into a brand new era with our EQ air system. The EQ system perfectly balances positive and negative spring independent from rider weight, which results in amazing performance and precise support across the range. This customizes feel for each individual rider optimizing SAG and volume control. Pairing the EQ system with the external damping adjustments of our PCS cartridges promise a supple coil spring feel in a lightweight, progressive and easy to adjust air spring package. You can set your SAG according to your intended riding style

and the EQ system will balance it with the right amount of negative spring force helping you to create a precise and effortless tune. The EQ system will improve fork sensitivity of small repetitive bumps while providing plenty of mid-stroke support for those bigger hits resulting in enhanced comfort and performance when riding any kind of terrain.

### FUNCTIONAL FEATURES

Greater, automatic spring adjustability based on the riding style and weight of the rider

- Improved fork sensitivity for those small but fast repetitive bumps
- Super consistent damping performance in tandem with the PCS system



# ***PCS – PISTON COMPENSATOR SYSTEM***

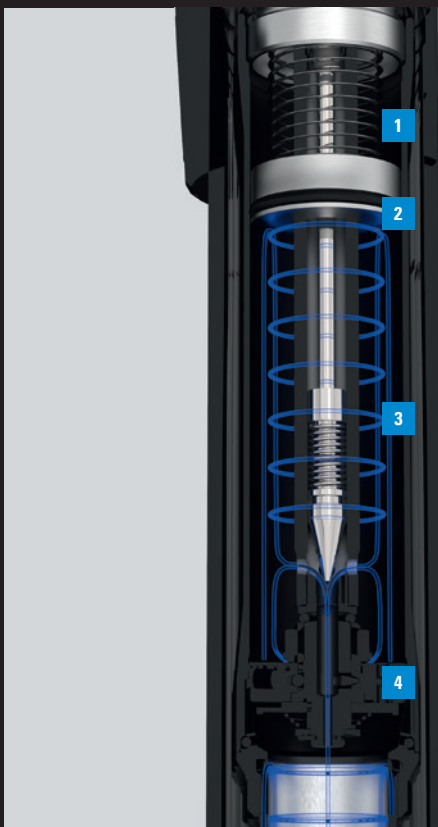
***MORE TRACTION, CONTROL AND CONSISTENCY***



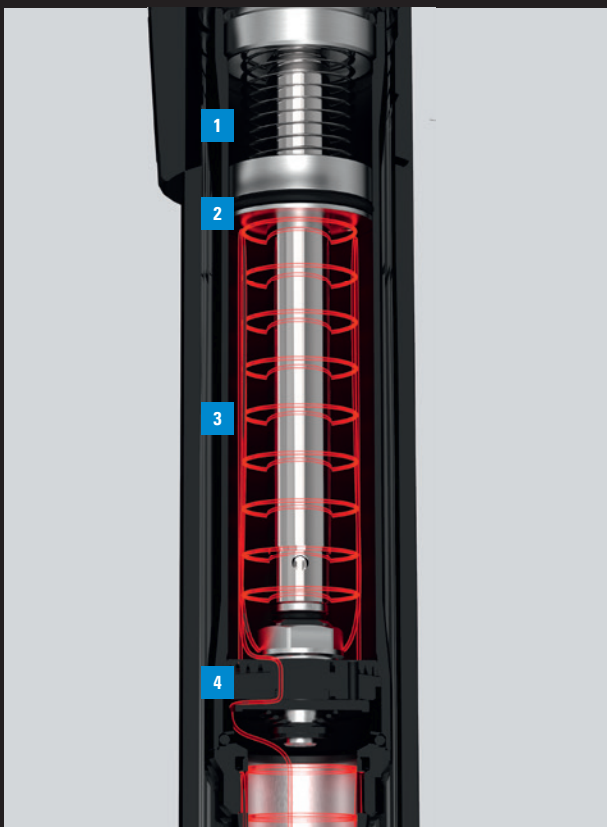
**WATCH THE  
PCS VIDEO**

LEARN MORE AT [WWW.SRSUNTOUR.COM/PCS](http://WWW.SRSUNTOUR.COM/PCS)

## LOW SPEED COMPRESSION



## HIGH SPEED COMPRESSION



- 1 Air
- 2 PCS avoids vacuum effect
- 3 Oil (Red and blue marked area)
- 4 Piston management of high / low speed compression

### THE ULTIMATE IN TRACTION, CONTROL AND CONSISTENCY

With over 20 years of refinement, SR Suntour's Cartridge Science Program has created the most controlled, consistent and functional dampers we've ever produced. PCS is a simple and repeatable way of reducing cavitation (air and oil mixing and creating pressure). Less cavitation means more predictable damping performance, and with cartridges being tested to over 200,000 cycles that performance should last run after run, ride after ride. When it does need servicing, our Quick Service Product (QSP) Philosophy, ensures that you'll spend less time in the work stand and more time on the trail.

### 3CR PCS

With easy 3-position compression adjustment you can go from open to mid to firm at the touch of a lever. Backed with our PCS system to reduce cavitation you can instantly tune your ride to the terrain. Open: Supportive but ready for big hits, varying terrain and downhills Mid: Extra support for hard charging, technical climbing and undulating terrain Firm: Efficient pedaling for roads, smooth climbing and big sprints.

### 2CR PCS

Take all the guesswork out of your suspension with easy 2 position on-the-fly adjustment. Whether you choose the fully open position to tame the terrain or the firm position for the utmost in pedaling efficiency the 2CR PCS cartridge has you covered.

# PCS CARTRIDGES

## RC+-PCS



**INTERNAL SHIM BASED HIGH SPEED COMPRESSION AND REBOUND MANAGEMENT**  
**EXTERNAL LOW SPEED COMPRESSION & REBOUND ADJUST**  
**PCS SYSTEM (PISTON COMPENSATOR SYSTEM)**

Race proven WERX cartridge with PCS (Piston Compensator system) floating piston provides consistent damping in all conditions, eliminating cavitation

- Extra oil flow for high speeds and hard impacts while still offering excellent performance for both small bumps and trail chatter
- High and low speed circuit work independent but transition seamlessly into each other.
- Forged alloy adjust knobs with integrated design
- Updated internal seals greatly improve durability for Trail/AM and Enduro usage
- Light "Click" index feeling for easy and sure operation



## RC-PCS



**LOW SPEED COMPRESSION ADJUST**  
**REBOUND ADJUST**  
**PCS SYSTEM (PISTON COMPENSATOR SYSTEM)**

Race proven WERX cartridge with PCS (Piston Compensator system) floating piston provides consistent damping in all conditions, eliminating cavitation

- Updated internal seals greatly improve durability for Trail, Enduro and DH riding
- Forged alloy adjust knobs with integrated design
- Light "Click" index feeling for easy and sure operation



## 3CR-PCS



**3 POSITIONS OF COMPRESSION ADJUST**  
**LOW SPEED REBOUND ADJUST**  
**PCS SYSTEM (PISTON COMPENSATOR SYSTEM)**

Race proven WERX cartridge with PCS (Piston Compensator system) floating piston provides consistent damping in all conditions, eliminating cavitation

- 3 step (firm, medium, open) low speed compression adjustment. Low speed rebound damping adjust.
- Updated internal seals greatly improve durability for Trail, Enduro and DH riding
- Light "Click" index feeling for easy and sure operation





## 2CR-PCS



**2 POSITIONS OF  
COMPRESSION ADJUST  
LOW SPEED REBOUND  
ADJUST  
PCS SYSTEM (PISTON  
COMPENSATOR SYSTEM)**

Race proven WERX cartridge with PCS (Piston Compensator system) floating piston provides consistent damping in all conditions, eliminating cavitation

- 2 step (firm, open) low speed compression adjustment. Low speed rebound damping adjust
- Updated internal seals greatly improve durability for Trail, Enduro riding
- Light "Click" index feeling for easy and sure operation



## RLR-PCS



**REBOUND ADJUST  
REMOTE SPEED LOCK  
PCS SYSTEM (PISTON  
COMPENSATOR SYSTEM)**

Race proven WERX cartridge with PCS (Piston Compensator system) floating piston provides consistent damping in all conditions, eliminating cavitation

- Hydraulic Remote Lockout
- Drastic improvement of riding efficiency & its adjustability for cross country & trail ride
- Forged alloy adjust knobs with integrated design
- Updated internal seals greatly improve durability for Trail, Enduro and DH riding
- Light "Click" index feeling for easy and sure operation



## LOR-PCS



**2 POSITIONS OF  
COMPRESSION ADJUST  
LOW SPEED REBOUND  
ADJUST  
PCS SYSTEM (PISTON  
COMPENSATOR SYSTEM)**

Race proven WERX cartridge with PCS (Piston Compensator system) floating piston provides consistent damping in all conditions, eliminating cavitation

- Hydraulic Lockout with adjustable rebound damping with blow off feature.
- Forged alloy adjust knobs with integrated design
- Updated internal seals greatly improve durability for Trail, Enduro and DH riding
- Light "Click" index feeling for easy and sure operation



## RLRC-PCS



**LOW SPEED COMPRESSION  
ADJUST  
REBOUND ADJUST  
REMOTE SPEED LOCK  
PCS SYSTEM (PISTON  
COMPENSATOR SYSTEM)**

Race proven WERX cartridge with PCS (Piston Compensator system) floating piston provides consistent damping in all conditions, eliminating cavitation

- 3 in 1 function: Lock out, low speed compression adjust & rebound adjust in one cartridge.
- Drastic improvement of riding efficiency & its adjustability for cross country & trail ride
- Forged alloy adjust knobs with integrated design
- Updated internal seals greatly improve durability for Trail, Enduro and DH riding
- Light "Click" index feeling for easy and sure operation
- Ergonomic design remote lock lever for faster and easier operation



## LORC-PCS



**LOW SPEED COMPRESSION  
ADJUST  
REBOUND ADJUST  
SPEED LOCK  
PCS SYSTEM (PISTON  
COMPENSATOR SYSTEM)**

Race proven WERX cartridge with PCS (Piston Compensator system) floating piston provides consistent damping in all conditions, eliminating cavitation

- 3-in-1 Lock out + low speed compression & rebound adjust in one cartridge
- Drastic improvement of riding efficiency & its adjustability for cross country & trail ride
- Forged alloy adjust knobs with integrated design
- Updated internal seals greatly improve durability for Trail, Enduro and DH riding
- Light "Click" index feeling for easy and sure operation





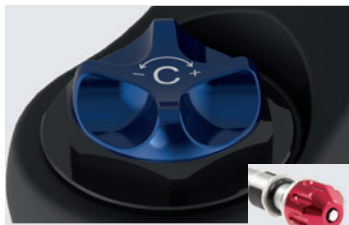




# DAMPING ADJUSTMENT



RC+ -PCS



RC-PCS



R-2CR-PCS



3CR-PCS



2CR-PCS



2CR-PCS



RLRC-PCS



LORC-PCS



RLR-PCS



LOR-PCS



3CR



2CR



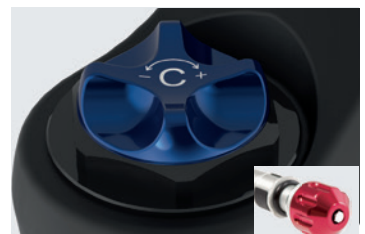
2CR



2CR



2CR



RC



RLR



LOR



LOR



RL



LO



LO



R



HLO

# DAMPING ADJUSTMENT

APPLICATION TABLE	RC+	R-2CR	3CR	2CR	RLRC	LORC	RC	R	RLR	LOR	RL	LO	HLO
RUX	●	-	-	-	-	-	-	-	-	-	-	-	-
DUROLUX	●	-	-	-	-	-	-	-	-	-	-	-	-
AURON	●	-	-	-	-	-	-	-	-	-	-	-	-
AION	-	-	●	●	-	-	●	-	-	-	-	-	-
ZERON	-	-	●	●	-	-	●	●	-	-	-	-	-
AXON	-	-	-	-	●	●	●	-	-	-	-	-	-
RAIDON	-	●	-	●	-	-	-	-	●	●	-	-	-
XCR	-	●	-	●	-	-	-	●	●	●	●	●	-
EPIXON	-	●	-	●	-	-	-	-	-	-	-	-	-
XCM	-	-	-	-	-	-	-	-	●	●	●	●	-
XCT	-	-	-	-	-	-	-	-	-	-	-	-	●
XCE	-	-	-	-	-	-	-	-	-	-	-	-	-
M3010	-	-	-	-	-	-	-	-	-	-	-	-	-
MOBIE36	-	-	●	●	-	-	-	-	-	-	-	-	-
MOBIE35 CGO	-	-	-	●	-	-	-	●	-	-	-	-	-
MOBIE34	-	-	-	●	-	-	-	-	-	-	-	-	-
MOBIE34 CGO	-	-	-	-	-	-	-	●	-	-	-	●	-
MOBIEA34	-	-	-	-	-	-	-	-	-	●	-	●	-
MOBIEA32	-	-	-	-	-	-	-	-	-	●	-	●	-
GVX	-	-	-	-	-	-	-	-	●●	●●	-	-	-
NRX	-	-	-	●	-	-	-	-	-	●	-	●	-
NCX	-	-	-	●	-	-	-	-	-	-	●	●	-
NVX	-	-	-	-	-	-	-	-	-	●	●	●	-
NEX	-	-	-	-	-	-	-	-	-	-	●	●	●

● PCS CARTRIDGE

NAME	FUNCTION
<b>RC+ -PCS</b>	External low speed compression and rebound adjustment, internal shim based high speed compression and rebound management with PCS system..
<b>RC-PCS</b>	Low speed compression and low speed rebound damping adjusts with blow-off feature along with PCS system.
<b>R-2CR-PCS</b>	Remote Lockout with 2 positions of compression (firm setting and open setting) with low speed rebound adjust along with PCS system.
<b>3CR-PCS</b>	3 positions of compression (firm setting, medium setting and open setting) with low speed rebound adjust along with PCS system.
<b>2CR-PCS</b>	2 positions of compression (firm setting and open setting) with low speed rebound adjust along with PCS system.
<b>RLRC-PCS</b>	Hydraulic Remote Lockout with low speed compression and low speed rebound damping adjusts with blow-off feature along with PCS system.
<b>LORC-PCS</b>	Hydraulic Lockout with low speed compression and low speed rebound damping adjusts with blow-off feature along with PCS system.
<b>RLR-PCS</b>	Hydraulic Remote Lockout with rebound damping adjusts with blow-off feature along with PCS system.
<b>LOR-PCS</b>	Hydraulic Lockout with adjustable rebound damping with blow-off feature along with PCS system.

NAME	FUNCTION
<b>3CR</b>	3 position of compression( firm setting, medium setting and open setting) with low speed rebound adjust.
<b>2CR</b>	2 positions of compression (firm setting and open setting) with low speed rebound adjust.
<b>RC</b>	Low speed compression and low speed rebound damping adjusts with blow-off feature.
<b>RLR</b>	Hydraulic Remote Lockout with adjustable rebound damping with blow-off feature.
<b>LOR</b>	Hydraulic Lockout with adjustable rebound damping with blow-off feature.
<b>RL</b>	Hydraulic Remote Lockout with fixed rebound damping with blow-off feature.
<b>LO</b>	Hydraulic Lockout with fixed rebound damping with blow-off feature.
<b>R</b>	Fix compression with low speed rebound adjust

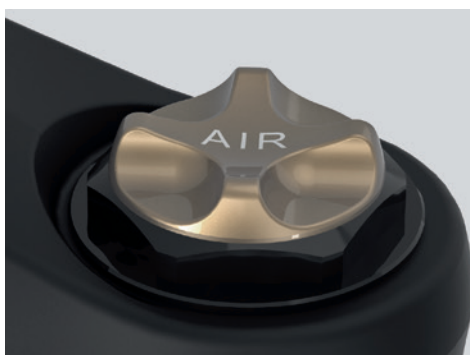




## SPRING SYSTEM



**FEG617: AIR EQ / AIR**  
Dual air spring system / Standard air spring



**FAA362: AIR EQ / AIR**  
Dual air spring system / Standard air spring



**FEG551: AIR EQ**  
Dual air spring system



**FAA121: AIR EQ / AIR**  
Dual air spring system / Standard air spring



**FEE088: COIL ADJUSTABLE**  
Coil spring with adjustable preload



**FEE250: COIL**  
Coil spring

APPLICATION TABLE	FEG617	FAA362	FEG551	FAA121	FEE088	FEE250
RUX	●	-	-	-	-	-
DUROLUX	●	-	-	-	-	-
AURON	●	-	-	-	-	-
AION	-	-	●	-	-	-
ZERON	-	-	●	-	-	-
AXON	-	●	-	-	-	-
RAIDON	-	-	-	●	-	-
XCR	-	-	-	●	●	-
EPIXON	-	-	●	-	-	-
XCM	-	-	-	●	●	-
XCT	-	-	-	-	●	-
XCE	-	-	-	-	●	-
M3010	-	-	-	-	●	●
MOBIE36	-	-	●	-	-	-
MOBIE35 CGO	-	-	●	-	-	-
MOBIE34	-	●	●	●	-	-
MOBIE34 CGO	-	-	-	-	-	●
MOBIEA34	-	-	-	●	-	-
MOBIEA32	-	-	-	-	●	-
GVX	-	●	-	-	-	-
NRX	-	-	●	●	●	-
NCX	-	-	-	●	●	●
NVX	-	-	-	-	●	-
NEX	-	-	-	-	●	-

# ADJUSTABLE AIR CHAMBER VOLUME

## VOLUME SPACER LOGIC

Adjust your spring curve by using different amount of rubber volume spacers. This function allows the rider to choose between a more linear or a more progressive characteristic curve. More spacers for more progression. Less spacers for more comfort. Visit [www.srsuntour.com](http://www.srsuntour.com) for tech videos and product manuals with detailed information.

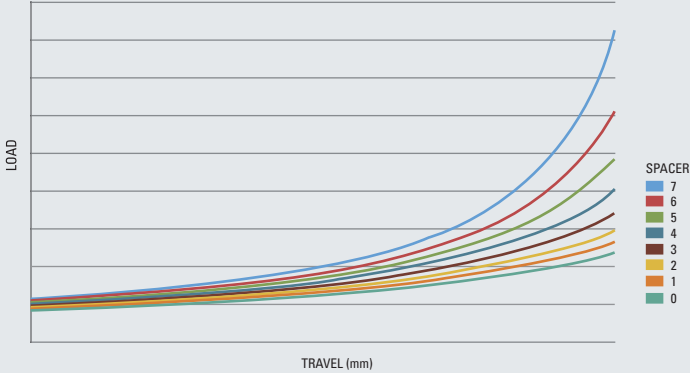
Air spring curve can be widely adjustable, which can bring the extra comfort wider range of total weight of "bike + rider + luggage".



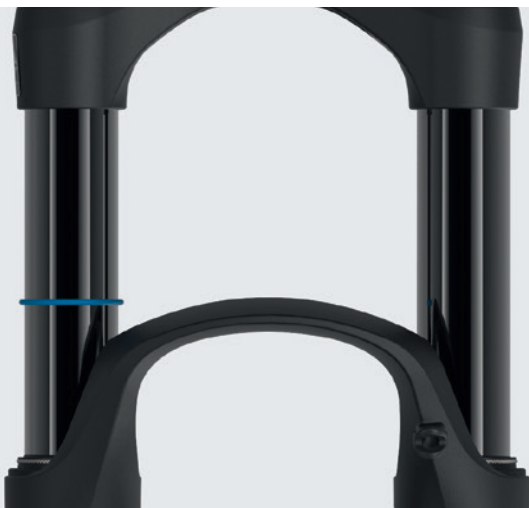
## EXAMPLE FOR SPACER SETUP

RIDING STYLE	RIDER WEIGHT Pressure 25% Sag	55-65 Kg 55 PSI	65-75 Kg 65 PSI	75-85 Kg 75 PSI
	Aggressive			
	Balanced			
	Easy	No Spacer		

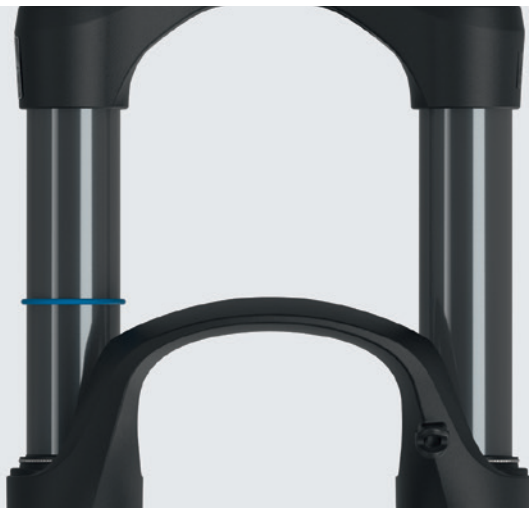
## EXAMPLE SPRING CHARACTERISITIC: DUROLUX EQ 29, 160mm travel



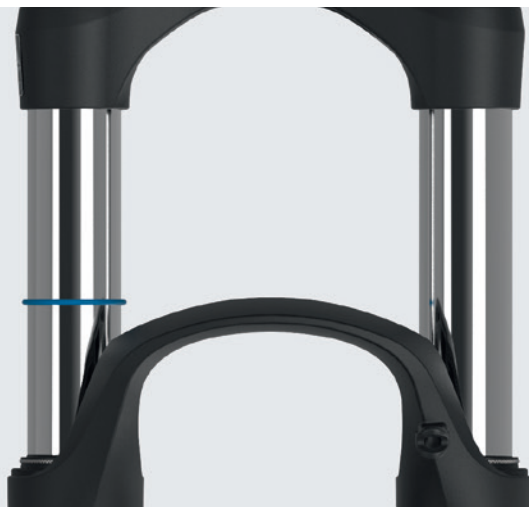
## STANCHION



**HARD ANODIZED BLACK** A7 / A6000 series aluminum



**QPQ BLACK STKM**



## BOTTOM CASE COLORS



**MATT BLACK**  
Color code YS727



**GLOSS BLACK**  
Color code YS728



**METALLIC SLATE**  
Color code YS941



**GLOSS WHITE**  
Color code YS701

## DECALS



**COMPANY COLOR**  
Black



**COMPANY COLOR**  
White



**METALLIC SLATE**  
Metallic Gray



**STEALTH**  
with glossy decal



**STEALTH**  
with matt decal

## Q-LOC AND THRU AXLE SYSTEMS



Q-LOC is a patented quick release system for thru axles fully deserving of the name "quick". Q-LOC 2 is the logical evolutionary step, guaranteeing 100% compatibility with all kinds of hub axle designs. A simple push and a little twist of the nut enables a quick removal of the axle. Exchanging the axle is as fast as extracting the axle thanks to the patented expander design which smoothly passes the thru axle and latches safely with a reassuring click sound. Safety and speed is crucial when it comes to pressurised wheel changes during a race. Q-LOC2 offers both in a super lightweight axle.



**15QLC32 / 15QLC32-110**  
Ø15mm, O.L.D.: 100mm / 110mm  
Weight: 118g / 122g



**15QLC32S**  
Ø15mm, O.L.D.: 100mm  
Weight: 108g



**15AH4 (TOOL TYPE)**  
Ø15mm, O.L.D.: 100mm / 110mm  
Weight: 48g / 50g



**15AH3 (TOOL TYPE)**  
Ø15mm, O.L.D.: 100mm / 110mm  
Weight: 65g / 69g



**15AHL (TOOL TYPE)**  
Ø15mm, O.L.D.: 110mm  
Weight: 42g



**12AH2 (TOOL TYPE)**  
Ø12mm, O.L.D.: 100mm



**T (TOOL TYPE)**  
Ø20mm, O.L.D.: 110mm  
Weight: 120g



**QR (TOOL FREE)**  
Ø20mm, O.L.D.: 110mm  
Weight: 120g

FEATURE	15QLC32 / 15QLC32-110	15QLC32S	15AH4 / 15AH4-110 (TOOL TYPE)	15AH3 / 15AH3-110 (TOOL TYPE)	15AHL-110 (TOOL TYPE)	12AH2	T (TOOL TYPE)	QR (TOOL TYPE)
ONE TOUCH RELEASE DESIGN	Yes	Yes	No	No	No	No	No	No
QUICK LEVER	Alloy with print	Alloy with print	-	-	-	-	-	-
COMPATIBLE O.L.D.	100mm / 110mm	100mm	100mm / 110mm	100mm / 110mm	110mm	100mm	110mm	110mm
THROUGH AXLE DIAMETER	15mm	15mm	15mm	15mm	15mm	12mm	20mm	20mm
THROUGH AXLE MATERIAL	Cr-mo	Alloy	Alloy	Alloy	Alloy	Alloy	Alloy	Alloy
QUICK AXLE MATERIAL	Cr-mo	Cr-mo	-	-	-	-	-	-
WEIGHT	118g / 122g	108g	88g / 91g	65g / 69g	42g	NA	120g	120g
PART CODE	FKA069-25/26	FKA097-25/26	FKA133-02	FKA124-00	FKA116-02	FKA120-00	FKA099-02	FKA094-02



## ASSEMBLY INSTRUCTIONS

**REMOVE  
QLOC**



**INSERT  
QLOC**





**WATCH THE  
VIDEO TUTORIAL!**

APPLICATION TABLE	T	QR	15AH4	15AH4-110	15AHL-110	15AH3	15AH3-110	15AHL-110	12AH2	15QLC32	15QLC32-110	15QLC32S
RUX	●	○	-	-	-	-	-	-	-	-	-	-
DUROLUX38	-	-	-	●	-	-	-	-	-	-	-	-
DUROLUX36	-	-	-	●	-	-	-	-	-	-	-	-
AURON	-	-	-	●	-	-	-	-	-	-	-	-
AION	-	-	-	●	-	-	-	-	-	-	-	-
ZERON	-	-	-	●	-	-	-	-	-	-	●	-
AXON34 WERX/ELITE	-	-	-	-	-	-	-	●	-	-	-	-
AXON34	-	-	-	●	-	-	-	-	-	-	-	-
RAIDON34	-	-	-	●	-	-	-	-	-	-	-	-
RAIDON32	-	-	-	-	-	-	-	-	-	-	●	-
XCR36	-	-	-	●	-	-	-	-	-	-	-	-
XCR34	-	-	-	●	-	-	-	-	-	-	●	-
XCR32	-	-	-	-	-	-	-	-	-	-	●	-
XCM32 BOOST	-	-	-	●	-	-	○	-	-	-	-	-
XCM32	-	-	●	-	-	○	-	-	-	-	-	-
XCM34	-	-	-	●	-	○	-	-	-	-	-	-
MOBIE36	-	-	-	●	-	-	-	-	-	-	-	-
MOBIE35	-	-	-	●	-	-	-	-	-	-	-	-
MOBIE34 BOOST	-	-	●	●	-	-	-	-	-	-	-	-
MOBIE34	-	-	●	-	-	-	-	-	-	-	-	-
MOBIEA34	-	-	-	●	-	-	○	-	-	-	-	-
MOBIEA32	-	-	●	-	-	●	-	-	-	-	-	-
GVX	-	-	●	-	-	-	-	-	○	-	-	-
NRX32	-	-	●	-	-	-	-	-	-	-	-	●
NVX32 BOOST	-	-	-	●	-	-	○	-	-	-	-	-
NVX32	-	-	●	-	-	○	-	-	-	-	-	-
NCX32	-	-	-	●	-	-	-	-	-	-	-	●
NEX-E25	-	-	-	-	-	-	-	-	-	-	-	●

● standard ○ optional

**LIGHTWEIGHT HOLLOW CROWN**



 **HOLLOW CROWN**

**HOLLOW CROWN TECHNOLOGY**  
Lightweight forged Hollow Crown Technology



**CARBON**

**CARBON CROWN TECHNOLOGY**  
Ultra-Lightweight Carbon Crown

**STEERER TUBE**



**1.5"-1 1/8" TAPER**  
CTS (Conical Tapered Steerer)  
Upper 1-1/8", Lower 1.5"  
Material: Alloy / Carbon / STKM



**1.8"-1 1/8" TAPER**  
CTS (Conical Tapered Steerer)  
Upper: 1-1/8", Lower 1.8" Material: Alloy

**1.8" TAPER**  
CTS (Conical Tapered Steerer)  
only C74 (74mm crown size)

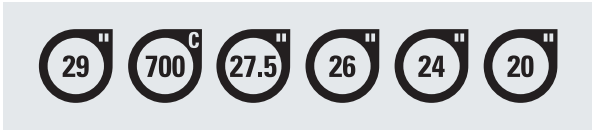


**1-1/8"**  
TS: Upper 1-1/8"  
Material: Alloy / cr-mo / STKM

**STANCHION DIAMETER**



**WHEEL SIZE**



## BRAKE TYPE



**P**  
PIVOT BRAKE TYPE AKA. V-BRAKE



**DS**  
POSTMOUNT DISC BRAKE TYPE



**FDS**  
FLAT MOUNT DISC BRAKE TYPE

## ABS MOUNT



### MODELS WITH ABS SENSOR MOUNT:

DUROLUX38X-EVO-Boost  
AION38X/36X-Boost  
ZERON36X-Boost  
XCR36X-Boost  
XCR34X-Boost  
MOBIE36-Boost  
MOBIE35 CGO-Boost  
MOBIE34.Boost  
MOBIE34-D-Boost

### MODELS WITH ABS MOUNT:

DUROLUX38X-EVO-Boost  
AION38X/36X-Boost  
ZERON36X-Boost  
XCR36X-Boost  
XCR34X-Boost  
MOBIE36-Boost  
MOBIE35 CGO-Boost  
MOBIE34-Boost  
MOBIE34-D-Boost

For detailed information regarding ABS systems and brake options, please rely on the information provided by the related ABS or brake systems manufacturers.

# HEAD LAMP MOUNT



**INTEGRATED TYPE ON FORK CROWN**  
With smooth cable rooting



**INTEGRATED TYPE ON FORK BRACE**



**UNIVERSAL MOUNT**  
Bolt-on

# CABLE GUIDE



**HUB DYNAMO CABLE GUIDE**  
w/screws \*Option

APPLICATION TABLE	ON FORK CROWN	ON FORK BRACE	UNIVERSAL MOUNT	CABLE GUIDE HUB DYNAMO
EPIXON32	●			
NRX32IL	●			●
NRX32 E/ D	●			●
NCX E/ D	●			
NEX E25	●	●		●
NVX30	●			
NEX		●		●
M3010			●	●
MOBIE34 CGO	●			
MOBIE35 CGO	●			
MOBIE34 (D)	●			
MOBIE-A34	●			
MOBIE-A32	●			
NCX32-SP	●			
XCT			●	
XCE			●	
XCM32			●	
NVX32			●	

## SHORT FENDER



### SHORT FENDER MOUNT

Detachable integrated short fender

APPLICATION TABLE	SHORT FENDER TYPE
RUX BOOST	●
DUROLUX38/36 BOOST	●
AURON BOOST	●
AION38/36 BOOST	●
ZERON36 BOOST	●
AXON34 WERX/ELITE BOOST	●
AXON34 BOOST	●
RAIDON34/32 BOOST	●
XCM32	●
EPIXON32	-
GVX	●
XCT	-
XCE	-
M3010	-
MOBIE36/35/34 BOOST	●
MOBIE34/25/A34/A32	-
GVX	●
NRX32IL/32	-
NCX32	-
NEX	-
NVX32	-
NVX30	-
M3010	-

## LONG FENDER MOUNTS



### LONG FENDER TYPE

Disc brake type

### LONG FENDER TYPE

V-brake

APPLICATION TABLE	LONG FENDER TYPE DISC BRAKE	LONG FENDER TYPE V-BRAKE
RUX BOOST	-	-
DUROLUX38/36 BOOST	●	-
AURON BOOST	●	-
AION38/36 BOOST	●	-
ZERON36 BOOST	●	-
AXON34 BOOST	●	-
RAIDON34/32 BOOST	●	-
XCR36/34/32 BOOST	●	-
XCM32 BOOST	●	-
XCM32	●	-
XCM34	●	-
EPIXON32	●	-
XCE	-	-
M3010	-	●
MOBIE36/35/34 BOOST	●	-
MOBIE34/A34/A32	●	-
GVX	●	-
NRX	●	-
NCX32/NCX32 BOOST	●	-
NVX32/30 / NX32 BOOST	●	-
NEX/E25	●	●



