

Updated: NCX SP Original vs Fake / New 2024 NCX SP25 Descriptions



2024/12/9

The color of the top cover is different

The appearance of rubber stopper is different

Fake

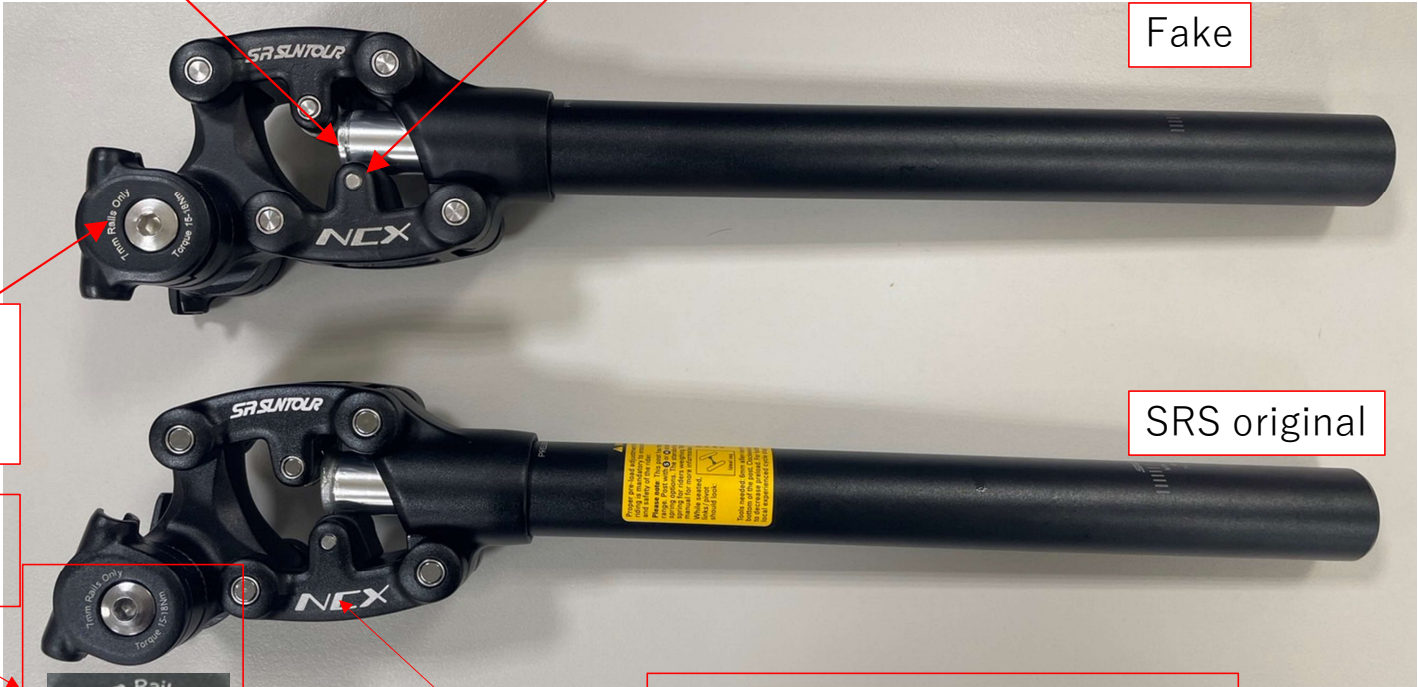
Fake products has different laser fonts

SRS original

Correct font
As below:



Correct stopper shapes are:



NCX SP Original vs Fake



Fake

SRS product

SRS products add warning label since June 2024

NCX SP Original vs Fake



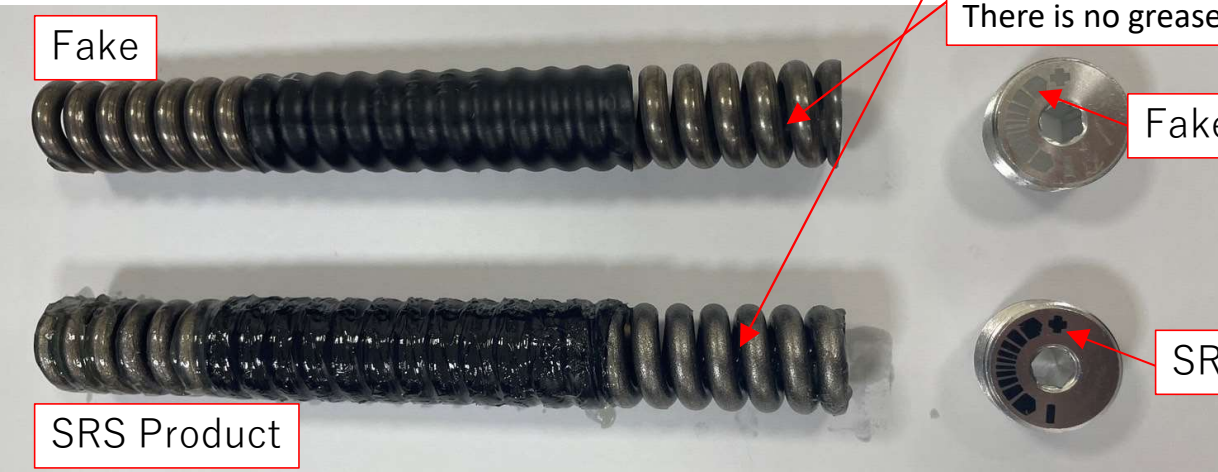
Fake has visible uneven surface



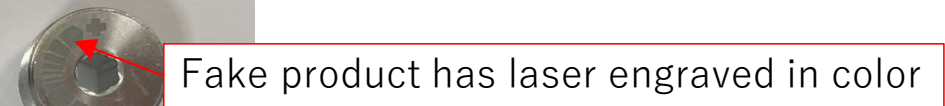
NCX SP Original vs Fake



NCX SP Original vs Fake



Fake product spring has a different surface than SRS products.
There is no grease on the fake product.



Fake product has laser engraved in color



SRS product is printed



There are visible grinding and burn marks on both end of spring of fake product



Fake product's bushing is without grooves



Pin Size different.
SRS product is
Ø6.3

SP25 NCX NEW DESIGN UPDATE Design Changes



01 Wide link arm design

Wider pivot and bigger pins to support a total rider weight up to 120 kilograms.

02 Lower frame body

Improved design for higher stiffness, to accommodate bigger diameter posts and wider linkage arms.



SP12 NCX 27.2 bolt

Prior to the 2024 production version: All seat posts (SP12 NCX 31.6 and 27.2 and SP17 NCX 30.9) have a C-clip on the leading linkage bushing.

New **SP25 NCX**:

(1) 30.9 & 31.6mm version: C-clip design is maintained

The NCX_27.2mm version in year 2024 production is still SP12: the pin for roller is fixed by a small bolt without C-clip



SP25 NCX NEW DESIGN UPDATE

Warning Sticker Change



Yellow sticker version (previous NCX SP design)



White Hang Tag version on new NCX SP

