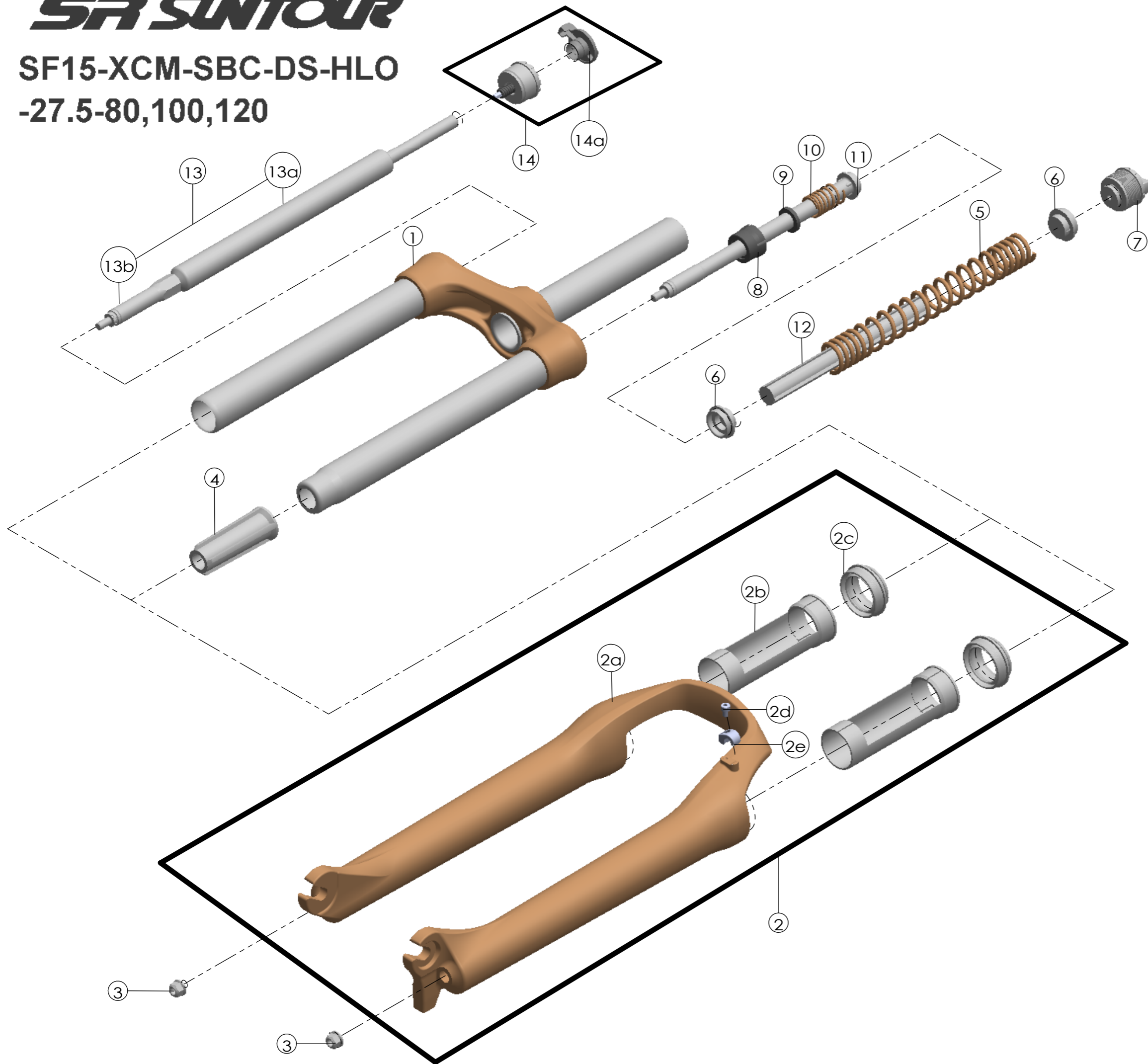


SUNTOUR

SF15-XCM-SBC-DS-HLO -27.5-80,100,120



| | | | |
|---------|-----------|---------|---|
| Date | 2014.2.19 | Version | 3 |
| Amended | 2017.7.4 | | |

| NO. | PART NAME | PART CODE | QTY. | | |
|-----|------------------|-----------|------|-----|-----|
| | | | 80 | 100 | 120 |
| 1 | UPPER ASSY | FKZ029-04 | 1 | - | - |
| | | FKZ029-05 | - | 1 | - |
| | | FKZ029-06 | - | - | 1 |
| 2 | BOTTOM CASE ASSY | FKZ059-10 | 1 | 1 | 1 |
| 2a | BOTTOM CASE | FPB394 | 1 | 1 | 1 |
| 2b | SLIDER SLEEVE | FEE785 | 2 | 2 | 2 |
| 2c | DUST SEAL | FAA070-10 | 2 | 2 | 2 |
| 2d | BOLT | FSB153 | 1 | 1 | 1 |
| 2e | HOSE GUIDE | FEG166 | 1 | 1 | 1 |
| 3 | FIXING NUT | FSN023 | 1 | 1 | 1 |
| 4 | SUPPORT TUBE | FEE959-00 | 1 | - | - |
| | | FEE806-40 | - | 1 | - |
| | | FEE806-30 | - | - | 1 |
| 5 | MAIN SPRING | FEP449 | 1 | - | - |
| | | FEP448 | - | 1 | - |
| | | FEP447 | - | - | 1 |
| 6 | SPRING GUIDE | FEE434-20 | 2 | 2 | 2 |
| 7 | ADJUST SYSTEM | FKE009-11 | 1 | 1 | 1 |
| 8 | FORK NOSE | FEE805 | 1 | 1 | 1 |
| 9 | REBOUND RUBBER | FEP053 | 1 | 1 | 1 |
| 10 | REBOUND SPRING | FEP189-20 | 1 | 1 | 1 |
| 11 | SUPPORT TUBE | FEG175 | 1 | 1 | 1 |
| 12 | DAMPER | FEP322-20 | 1 | 1 | 1 |
| 13 | DAMPER UNIT | FUN050-11 | 1 | 1 | - |
| | | FUN050-15 | - | - | 1 |
| 13a | DAMPER BODY | FUN050-00 | 1 | 1 | 1 |
| 13b | SUPPORT TUBE | FEE847-01 | 1 | 1 | - |
| | | FEE847-03 | - | - | 1 |
| 14 | LO ADJUST SYSTEM | FKE028-28 | 1 | 1 | 1 |
| 14a | LO KNOB | FEG426 | 1 | 1 | 1 |