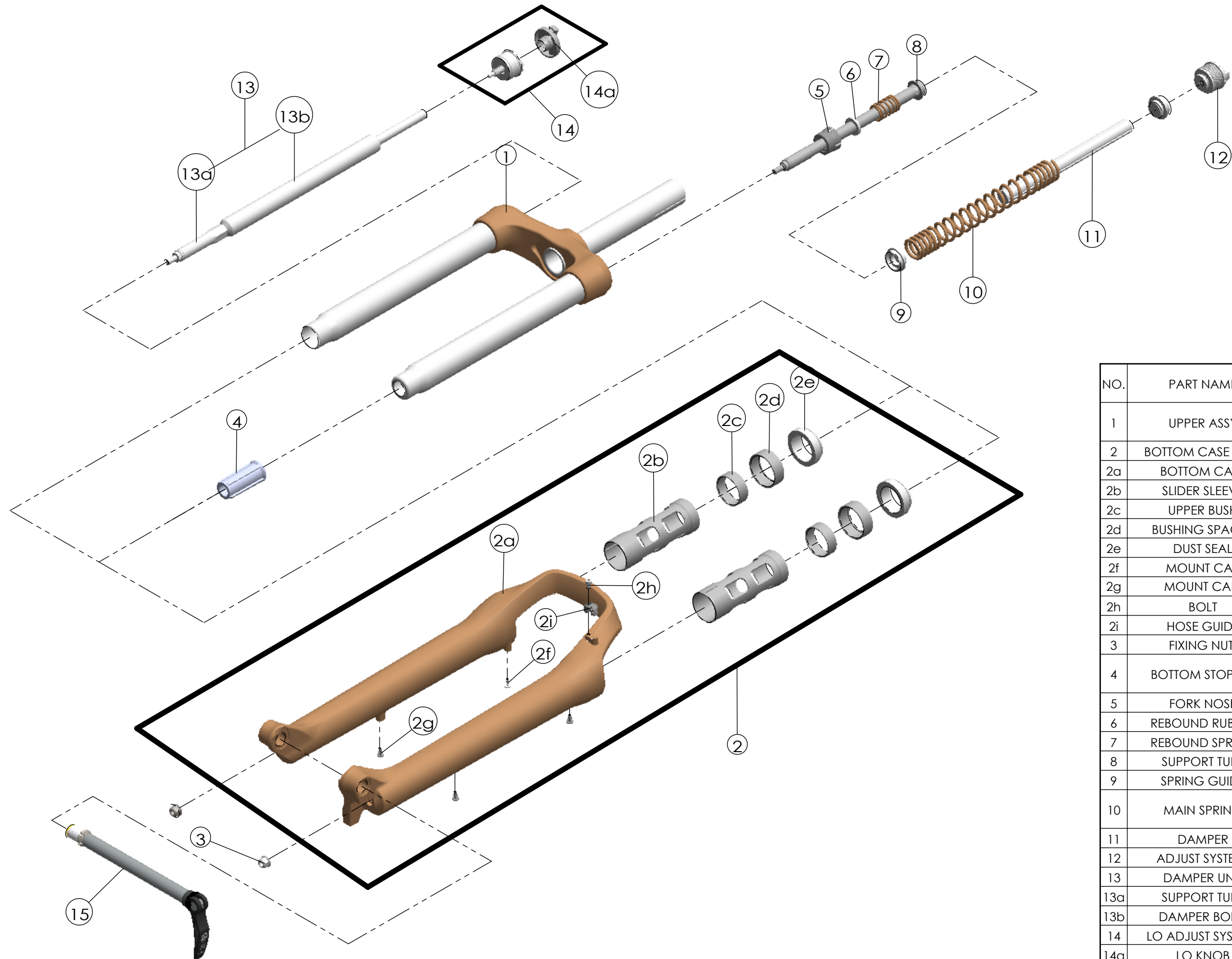


Date	2016.11.29	Version	2
Amended	2017.3.2		

## SF17-XCM32-DS-HLO-15QLC32-29-100,120



NO.	PART NAME	PART CODE	QTY.	
			100	120
1	UPPER ASSY	FKZ098-03	1	-
		FKZ098-04	-	1
2	BOTTOM CASE ASSY	FKZ099-10	1	1
2a	BOTTOM CASE	FPB440	1	1
2b	SLIDER SLEEVE	FEG377	2	2
2c	UPPER BUSH	FEE244	2	2
2d	BUSHING SPACER	FEG395	2	2
2e	DUST SEAL	FAA169-20	2	2
2f	MOUNT CAP	FAA199-10	2	2
2g	MOUNT CAP	FAA199	2	2
2h	BOLT	FSB153	1	1
2i	HOSE GUIDE	FEG166	1	1
3	FIXING NUT	FSN023	2	2
4	BOTTOM STOPPER	FEE806-40	1	-
		FEE806-30	-	1
5	FORK NOSE	FEE805	1	1
6	REBOUND RUBBER	FEPO53	1	1
7	REBOUND SPRING	FEP189-20	1	1
8	SUPPORT TUBE	FEG175	1	1
9	SPRING GUIDE	FEE434-10	2	2
10	MAIN SPRING	FEP748	1	-
		FEP759	-	1
11	DAMPER	FEP320-10	1	1
12	ADJUST SYSTEM	FKE009-21	1	1
13	DAMPER UNIT	FUN050-14	1	1
13a	SUPPORT TUBE	FEE847-02	1	1
13b	DAMPER BODY	FUN050-00	1	1
14	LO ADJUST SYSTEM	FKE028-27	1	1
14a	LO KNOB	FEG256	1	1
15	15QLC32-110 AXLE SET	FKA100-25	1	1