



DUROLUX38



# **DUROLUX<sub>38</sub>**

**EXTRA ROWDY**

REFINED SIMPLICITY™



# ***CONTENT – DUROLUX38***

## ***SPECS, TECHNOLOGY & FEATURES***

DUROLUX38 INTRODUCTION _____	03-05
HIGH PERFORMANCE _____	06
DUROLUX38 VIDEO _____	07
KEY SPECIFICATIONS _____	08-09
DETAILED SPECS _____	10
TECHNOLOGY _____	12
ABS MOUNT _____	13
SPECIFICATIONS _____	14
FORK SETTINGS _____	15-19
DUROLUX38 RAMPING _____	20
QUICK SERVICE PORTS _____	21
MATERIAL / CONTACT _____	22

**COVER**  
**RIDER** STEFAN PETER  
**LOCATION** MEGAVALANCHE, FRANCE  
**PHOTO** HOSHI YOSHIDA

## ***DUROLUX38*** ***EXTRA ROWDY***

We've taken everything you love about the DUROLUX and made it badass! The new DUROLUX38 is ready to take on even the most hectic lines with 38mm stanchions for added stiffness and even more precision. The DUROLUX38 is the choice for freeride, gravity riding and the most demanding enduro courses and can handle anything you can throw at it. Whether you're competing against the clock or against the terrain the DUROLUX38 will instill all the confidence needed to get you safely and smoothly down the trail and with our legendary durability you can turn around and do it again and again! Designed tough and smart with A7000 stanchions and hollow forged crown, QSP ports\*, an integrated fender, fully sealed and serviceable R2C2 and RC2 PCS dampers and extra volume spacers included for easy spring curve adjustment. Our tradition of product evolution brings the DUROLUX into a new era with the Air EQ system, perfectly equalizing the rider's weight to the spring curve resulting in exact positioning and support.

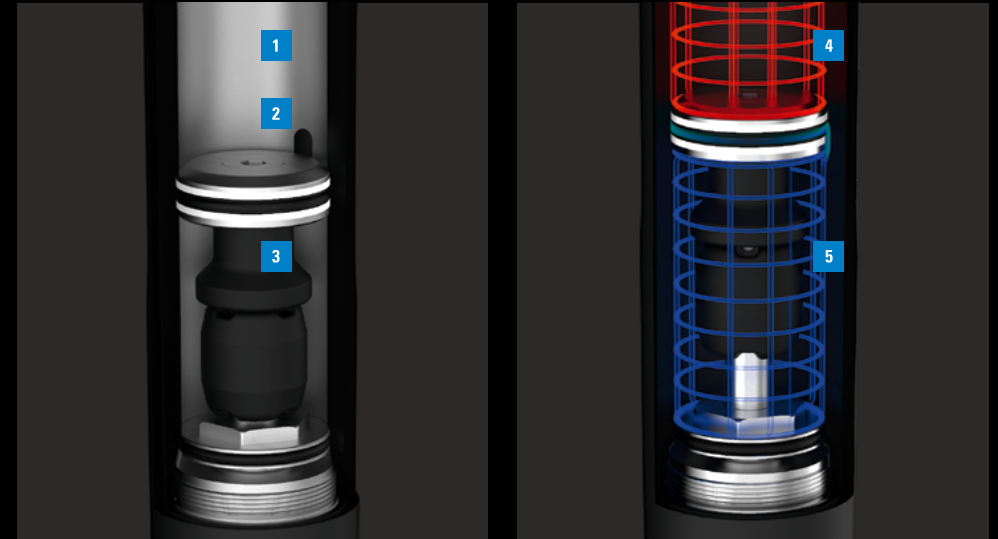


# EQ EQUALIZER SYSTEM

## FOR PRECISE & EFFORTLESS TUNING



- 01 Positive air chamber
- 02 Transfer port
- 03 Negative air Chamber
- 04 Positive air pressure
- 05 Negative air pressure



### SET YOUR SAG AND THE EQUALIZER (EQ) AIR NEGATIVE SPRING SYSTEM WILL BALANCE IT FOR YOU.

Our tradition of product evolution brings our forks into a brand new era with our all-new air EQ system. The EQ system perfectly equalizes the rider's weight to the spring curve which results in the exact positioning and support you need. This results in a customized feel for each individual rider optimizing sag and volume control. Pairing the EQ system with the external damping adjustments of our PCS cartridges results in a supple coil spring feel in a lightweight, progressive and easy to adjust air spring package. You can set your sag according to your intended riding style and the EQ system

will automatically balance it with the right amount of negative spring force helping you to create a precise and effortless tune. The EQ system will improve fork sensitivity of small repetitive bumps while providing plenty of mid-stroke support for those bigger hits resulting in enhanced comfort and performance when riding any kind of terrain.

### FUNCTIONAL FEATURES

- Greater, automatic spring adjustability based on the riding style and weight of the rider
- Improved fork sensitivity for those small but fast repetitive bumps
- Super consistent damping performance in tandem with the PCS system

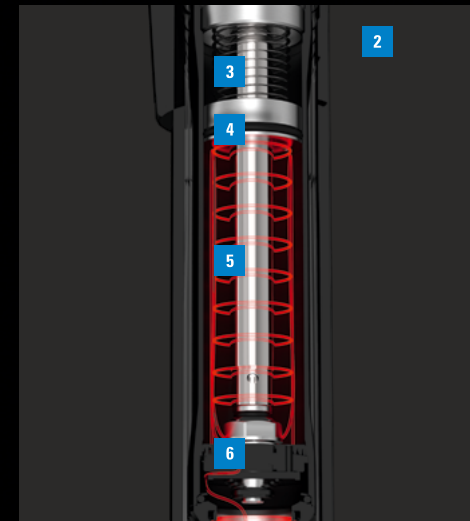
# PCS – PISTON COMPENSATOR SYSTEM

**MORE TRACTION, CONTROL AND CONSISTENCY**



- 01 Low speed compression
- 02 High speed compression

- 03 Air
- 04 PCS avoids vacuum effect
- 05 Oil (Red and blue marked area)
- 06 Piston management of high / low speed compression



## PERFORMANCE

Performance thru Controlled Speed. We believe we have developed a refined damper platform that can perform at any riding level, functions simply and follows our QSP philosophy.

## CONTROL

PCS is 17 years of constant refinement within our cartridge science program. PCS is a simple and repeatable way, to reduce cavitation (air and oil mixing, creating pressure, building bubbles) inside the cartridge. This separation significantly reduces cavitation, which provides consistent and predictable damping performance at a WC DH level as well as throughout an entire season of ambitious riding.

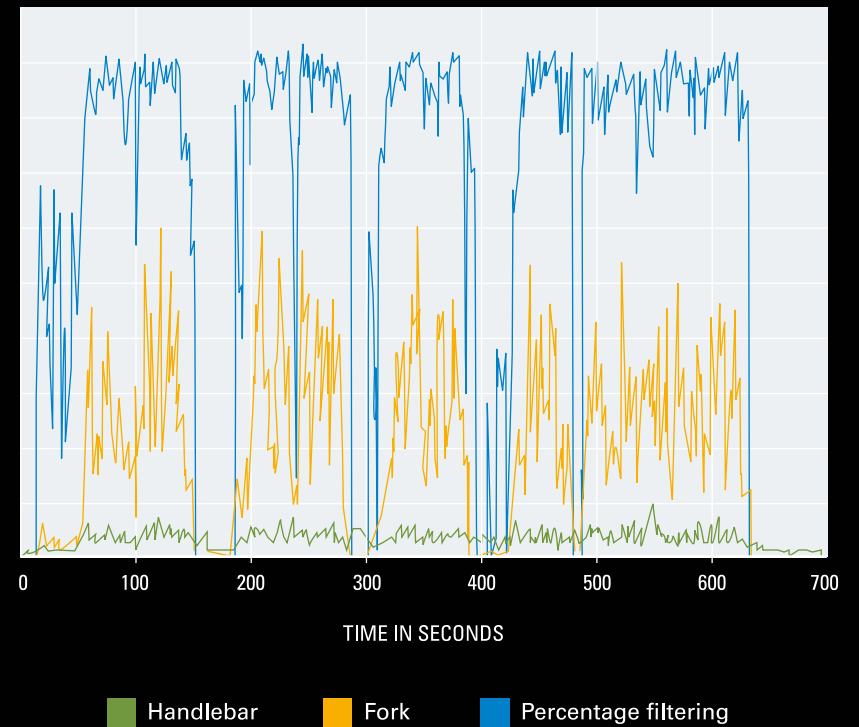
## LONGEVITY

Performance to us needs to be proven in the long run. Single cartridges with more than 200,000 cycles on our testing machines and countless hours with our WERX team have proven that our PCS is built to ride more hours and spend less time in a stand. But when the time comes for some fork care, service must be possible, quick and easy. All parts can be disassembled and the system can be bled and re-assembled again without the use of special tools. Quick Service Product (QSP) is our approach to apply simplicity to our designs.



RIDER RÉMY ABSALON  
LOCATION VOSGES, FRANCE  
PHOTO HOSHI YOSHIDA

## HIGH PERFORMANCE



## DDA ANALYSIS

New technologies have to prove themselves with modern data acquisition. We measured 20 to 30 percent less chatter on the handlebar compared to the predecessor. SR Suntour WERX athletes are closely involved in the development work - with success: Rémy Absalon (left), 12-times megavalanche and multiple winner of the French Enduro series.

# WATCH THE VIDEO



CLICK TO WATCH THE EQ  
VIDEO ON OUR YOUTUBE  
CHANNEL



SCAN TO WATCH THE  
DUROLUX38 VIDEO ON  
OUR YOUTUBE CHANNEL

[www.srsuntour.com/durolux-absalon](http://www.srsuntour.com/durolux-absalon)

## KEY SPECIFICATIONS

- + 38mm, Aluminum Alloy Hard Anodized Stanchions
- + Available in 29" Boost
- + Travel: 160mm, 170mm, 180mm
- + Next level of performance with the all new EQUALIZER™ (EQ) air negative spring system
- + PCS™ Piston compensator system cartridge with updated fast recovery piston design
- + Detachable integrated short fender
- + Long fender mounting points





## KEY SPECIFICATIONS

- + OFFSET 44mm
- + Hollow forged crown
- + Crown options C74 and C61
- Steerer Options 1.5 CTS, 1.8 CTS
- + New 15LH-110 Thread type axle with preload adjusting nut (Boost 15x110)
- + OEM Spec Option: ABS Mounting Points



# DUROLUX38 – DETAILED SPECS

**INTENDED USE** FREERIDE, ENDURO

**WHEEL** 29"

**TIRE CLEARANCE GRANTED** 29 BOOST 2.6  
INCLUDING TRAIL FENDER

**TRAVEL** 160mm, 170mm, 180mm

**CARTRIDGE** RIGHT SIDE: R2C2-PCS, RC2-PCS  
LEFT SIDE: AIR SPRING

**BRAKE** POST MOUNT 203mm Direct

**SPRING** AIR EQ (POSITIVE/NEGATIVE AIR  
EQUALIZER)

**STANCHIONS** A7000, HARD ANODIZED BLACK

**STEERER** 1.5" TO 1-1/8" TAPERED (CTS) ALLOY

**CROWN** HOLLOW FORGED R2C2/ RC2 PCS

**HUB** BOOST, 15X110mm

**AXLE** Ø15-110 15LH-110

**CROWN** HOLLOW FORGED R2C2/ RC2 PCS

**CASTING** MAGNESIUM

**AXLE TO CROWN** 29" 160mm EQUALS 580,5mm,  
170mm EQUALS 590,5mm AND 180mm EQUALS  
600,5mm

**COLORS** TEAM GRAY, MATT BLACK, GLOSS  
BLACK, GLOSS WHITE

**SPECIAL** SERVICEABLE CARTRIDGE, QSP  
GREASE AND PRESSURE PORTS, INTEGRATED  
AND DETACHABLE TRAIL FENDER, MOUNTING  
POINTS FOR CITY FENDER AND CROSSOVER  
E-MTB USAGE, E-BIKE READY FORK, AIR VOLUME  
ADJUST BY AIR VOLUME SPACERS INCLUDED.

**WEIGHT** STARTING FROM 2510g



160mm, 170mm,  
180mm



PISTON  
COMPENSATOR  
SYSTEM



220  
mm  
MAX  
DISC



38  
mm



HOLLOW  
CROWN

BOOST





RIDER ALEX VOLOKHOV  
LOCATION UTAH, USA  
PHOTO HOSHI YOSHIDA

# TECHNOLOGY



## PISTON COMPENSATOR SYSTEM

### **PISTON COMPENSATOR SYSTEM**

Floating on a magic carpet is the feeling we're aiming for. Reducing the impact from the ground into your body is the first step. With the PCS as the foundation and completely new designed shim based high-speed compression and rebound circuits, our new R2C2 cartridge is progress in the right direction with our testing data providing proof. Simple, reliable, durable and easy service performance.



### **EQUALIZER**

Set your SAG according to your intended riding style and the Equalizer (EQ) system will automatically balance it with the right amount of air negative spring force. For precisely & effortlessly the right tune.



### **QUICK SERVICE PRODUCTS**

Refined simplicity is our guiding principle. »High performance made simple« is the foundation of every one of our developments. Our PCS cartridge system is fully synchronized with our approach to applying simplicity to our designs. It not only aims to be technologically sophisticated but also to be user-friendly and low maintenance. Setup and maintenance are quick and easy and at lower cost. All parts can be disassembled and the system can be bled and re-assembly again without the use of special tools. We call them QSP - Quick Service Products. Offering quick service and state of the art technology to our customers across all levels of riding is the philosophy behind QSP.



### **HOLLOW CROWN**

Our lightweight forged hollow crown technology brings additional stiffness and keeps the weight down. It is 35 grams lighter than the solid crown.



RIDER RÉMY ABSALON  
LOCATION VOSGES, FRANCE  
PHOTO HOSHI YOSHIDA

## ABS MOUNT

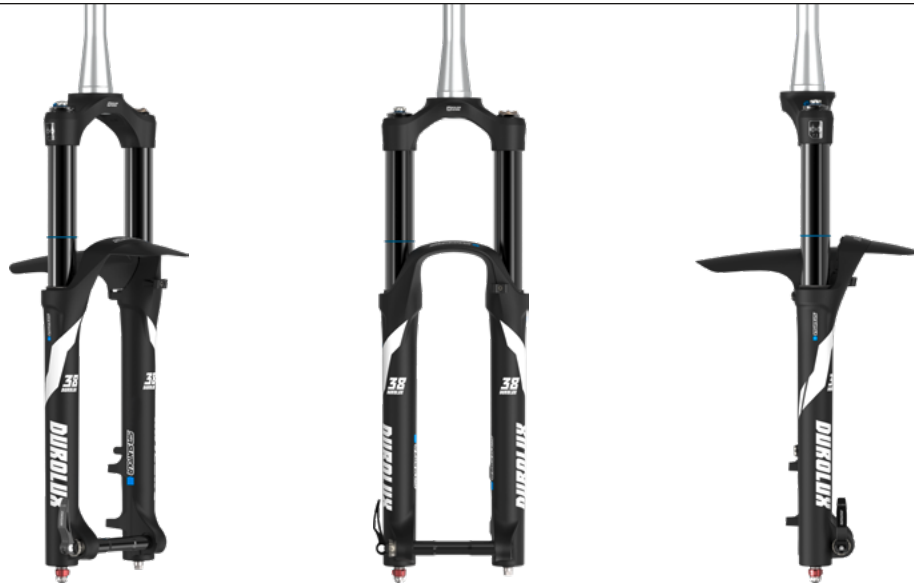


ABS system helps improve safety aspects while braking.

With ABS-WSS (wheel speed sensor) mounting points as standard feature, we are supporting ABS systems with DuroLux38 among other models. The Bosch ABS solution we specifically support with optional ABS direct mounting points (OEM feature) for DuroLux38 on all available standard travels.

For detailed information regarding ABS systems and brake options, please rely on the information provided by the related ABS or brake systems manufacturers.

# SPECIFICATIONS



TEAM GRAY



GLOSS BLACK



MATT BLACK




GLOSS WHITE

MODEL YEAR	MODEL NAME	MAIN SPECIFICATIONS							CROWN		STANCHION				STEERER TUBE	AXLE		BOTTOM CASE / BRAKE		
		Weight (g)	Wheel	Travel (mm)	Damper	Spring	Axle to crown (mm)	Offset (mm)	Mat.	Method	DIA (mm)	Mat.	Finish	Pitch (mm)	Size Material	O.L.D.	Axle	Mat.	Max rotor DIA.	Brake mount
SF21	DUROLUX38-BOOST EQ ABS R2C2-PCS DS 15LH-110 29"	-	29"x2.6"	160 170 180	R2C2- PCS	AIR (EQ)	600.5 (180travel) 590.5 (170 travel) 580.5 (160 travel)	44	Al	Hollow Forged	38	Al	Hard anodized, Black	145	1.5"to1-1/8" tapered(CTS), Alloy,(OP) 1.8"to1-1/8" tapered(CTS), Alloy	ø15- 110	15LH-110, (OP) 20LH-110	Mg	220mm	Post 203 Direct
SF21	DUROLUX38-BOOST EQ R2C2-PCS DS 15LH-110 29"	-	29"x2.6"	160 170 180	R2C2- PCS	AIR (EQ)	600.5 (180travel) 590.5 (170 travel) 580.5 (160 travel)	44	Al	Hollow Forged	38	Al	Hard anodized, Black	145	1.5"to1-1/8" tapered(CTS), Alloy	ø15- 110	15LH-110, (OP) 20LH-110	Mg	220mm	Post 203 Direct
SF21	DUROLUX38-BOOST EQ ABS RC2-PCS DS 15LH-110 29"	-	29"x2.6"	160 170 180	RC2- PCS	AIR (EQ)	600.5 (180travel) 590.5 (170 travel) 580.5 (160 travel)	44	Al	Hollow Forged	38	Al	Hard anodized, Black	145	1.5"to1-1/8" tapered(CTS), Alloy	ø15- 110	15LH-110, (OP) 20LH-110	Mg	220mm	Post 203 Direct
SF21	DUROLUX38-BOOST EQ RC2-PCS DS 15LH-110 29"	-	29"x2.6"	160 170 180	RC2- PCS	AIR (EQ)	600.5 (180travel) 590.5 (170 travel) 580.5 (160 travel)	44	Al	Hollow Forged	38	Al	Hard anodized, Black	145	1.5"to1-1/8" tapered(CTS), Alloy	ø15- 110	15LH-110, (OP) 20LH-110	Mg	220mm	Post 203 Direct
SF21	DUROLUX38-BOOST EQ ABS RC-PCS DS 15LH-110 29"	-	29"x2.6"	160 170 180	RC-PCS	AIR (EQ)	600.5 (180travel) 590.5 (170 travel) 580.5 (160 travel)	44	Al	Hollow Forged	38	Al	Hard anodized, Black	145	1.5"to1-1/8" tapered(CTS), Alloy	ø15- 110	15LH-110, (OP) 20LH-110	Mg	220mm	Post 203 Direct
SF21	DUROLUX38-BOOST EQ RC-PCS DS 15LH-110 29"	-	29"x2.6"	160 170 180	RC-PCS	AIR (EQ)	600.5 (180travel) 590.5 (170 travel) 580.5 (160 travel)	44	Al	Hollow Forged	38	Al	Hard anodized, Black	145	1.5"to1-1/8" tapered(CTS), Alloy	ø15- 110	15LH-110, (OP) 20LH-110	Mg	220mm	Post 203 Direct

# SAG FORK SETTING – MANUAL



 Before touching the detailed setting of your fork, make sure to read the owners manual first. If you don't have it on hand, follow the document (click left) onto our webpage.

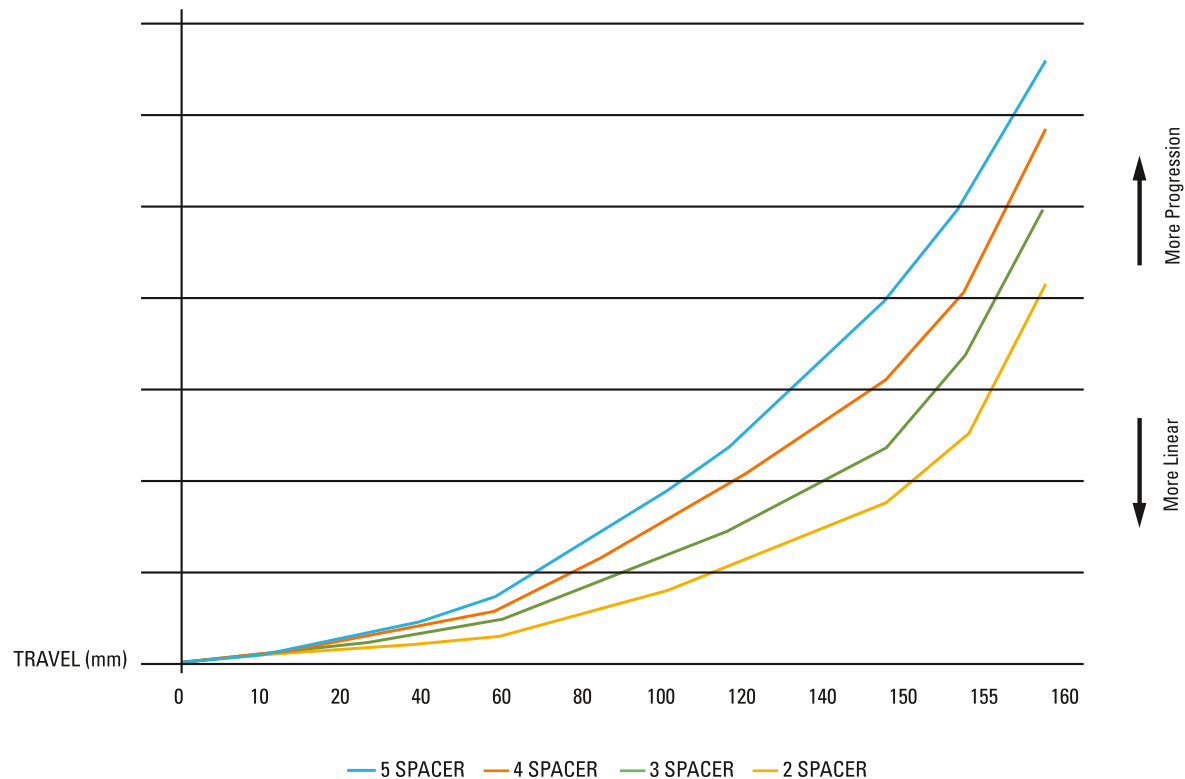
We recommend a minimum SAG of 25% (for more progression) and a maximum SAG of 35% (for more comfort).

TRAVEL	SAG MIN. / MAX. (mm)
160	40mm - 55mm
170	43mm - 60mm
180	45mm - 63mm

RIDERS WEIGHT	RECOMMENDED AIR PRESSURE DUROLUX38 EQ
< 55	< 40
55 - 65	40 - 50
65 - 75	50 - 60
75 - 85	60 - 70
85 - 95	70 - 85
95 <	85 +
<b>PRESSURE (FACTORY SETTINGS)</b>	<b>70 psi</b>
<b>MAX. PRESSURE</b>	<b>105 psi</b>

# FORK SETTING – VOLUME SPACER LOGIC

Example – spring characteristic:  
DUROLUX38 EQ 29, 160mm travel



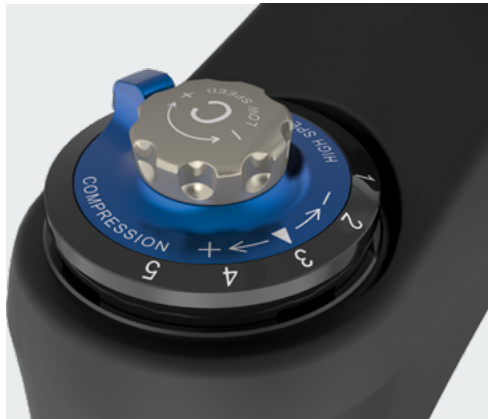
Adjust your spring curve by using different amount of rubber volume spacers part FEG 270-30. More spacers for more progression. Less spacers for more comfort. Before working on air volume spacers, make sure you deflate the fork. ⚠

	DUROLUX38 EQ air system	
	Factory setting	Max. possible spacers
Plastic volume spacer 7.5cc (does not change)	3	3
Adjustable Rubber volume spacer 7.5cc FEG 270-30	by travel	6
Travel 180	2	6
Travel 170	3	6
Travel 160	4	6



# FORK SETTING – COMPRESSION AND REBOUND ADJUST RANGE

## COMPRESSION



To open the low speed compression: Turn counter clockwise towards the (-). Result: You get a supple feel with sensitivity on small bumps. To close the low speed compression: Turn clockwise towards the (+). Result: The more you close, the more support you get. Compression feeling is firmest.

To open the high speed compression: Turn the blue knob towards (-) to reach figure 1

## REBOUND



To open the low speed rebound: Turn the knob clockwise toward the (-) to open the low speed rebound. Result: The global rebound speed is faster.

To open high speed rebound: Turn the red knob clockwise toward (-) to open the high speed rebound. Result: The fork is faster at the end of travel recovery.

Based on R2C2 PCS cartridge example

SETTINGS	COMPRESSION	REBOUND
HIGH SPEED	5 indicated steps*	4 indicated steps*
LOW SPEED	Up to 18 steps available	Up to 28 steps available

\*Please note, changes on the high speed range you can only detect on the trail while riding. Position 1 = full open, position 5 full closed compression damping.

# FORK SETTING – COMPRESSION AND REBOUND ADJUST RANGE

SETTINGS	COMPRESSION	COMPRESSION ADJUST	REBOUND ADJUST
<p><b>HIGH SPEED</b></p>	<p>Allows you to control the performance of the fork when you have bigger and faster impacts (generally speed over 1.6 m/s); e.g. jumps, root carpet, etc.</p>	<p>Place the blue knob on position 1 if you want less high speed. Place the blue knob on position 5 if you want more High speed management. As a starting point, we suggest that you place the nob on position 2.</p>	<p>(for R2C2 cartridges only!) This red knob manages the rebound speed at the end of the travel recovery. This allows you to ride with a faster low speed rebound if you like. Adjustment: Turn the red knob clockwise (towards (-)) until it stops. Now turn counter clockwise (toward (+)) until you get the proper amount of clicks. (full range is 4 clicks – 5 positions)</p>
<p><b>LOW SPEED</b></p>	<p>Allows you to control the performance of the fork in the situations where stress is caused by your body weight, e.g. banked curves, braking phases, slow steps, etc.</p>	<p>Turn the knob counter clockwise until it stops. Now turn clockwise until you reach 6 clicks. This is a good starting point. If you want more hydraulic support, you can turn clok-wise a few more clicks. If you want lower threshold and more sensitivity, you can turn counter clockwise.</p>	<p>This is the main knob to establish the global rebound speed. Adjustment: Turn the knob clockwise (toward (-)) until it stops. Now turn clockwise until you get the proper amount of clicks so that the fork recovers its original travel fast enough but always making sure you keep enough grip.</p>



RIDER KYLE WARNER  
 LOCATION UTAH, USA  
 PHOTO HOSHI YOSHIDA

## **FORK SUSPENSION SETTING – HYDRAULICS**

### **HOW TO SET UP YOUR BICYCLE LIKE A PRO – REMY ABSALON, DUROLUX38, TRAVEL 180mm**

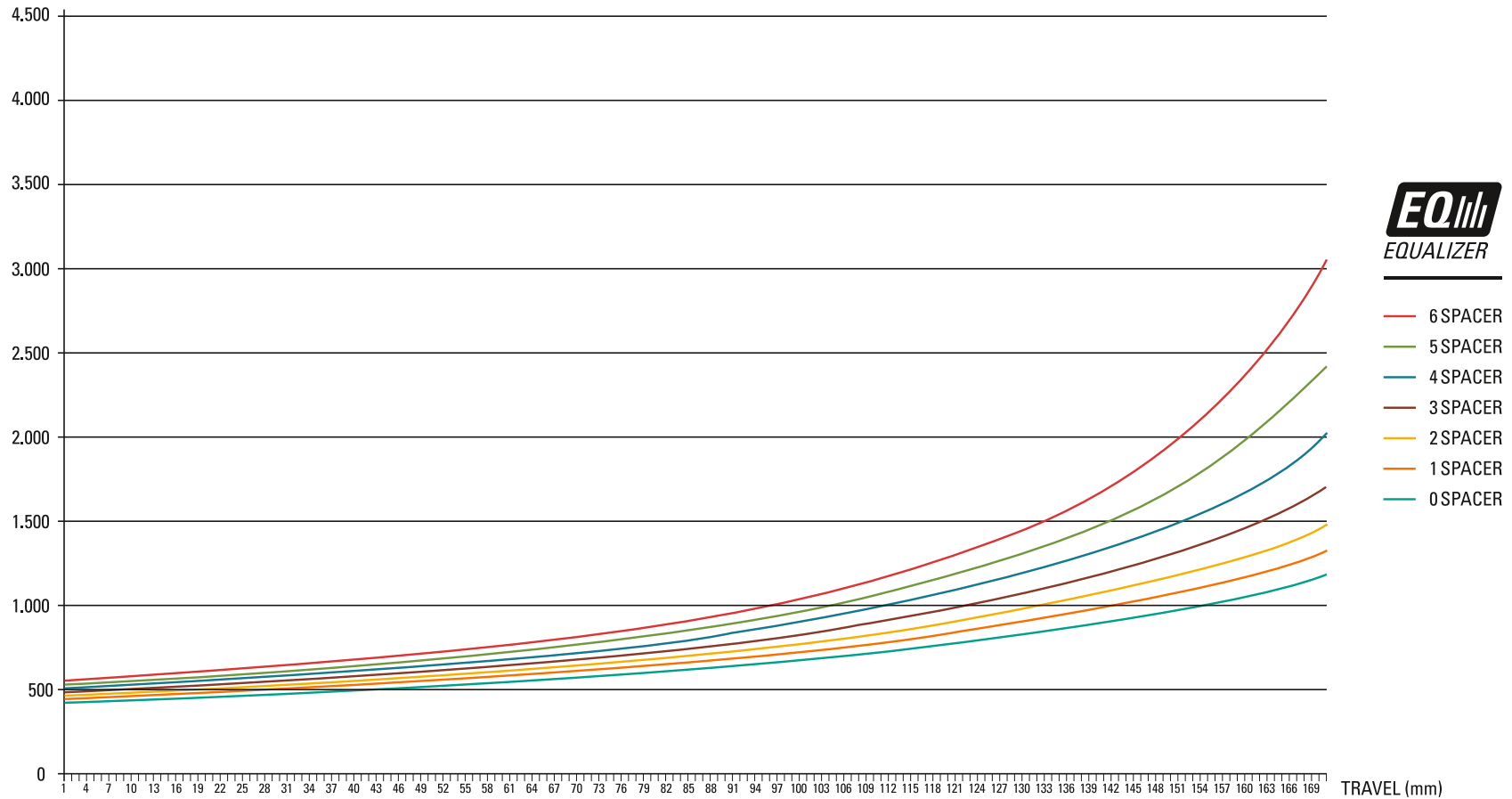
SETTINGS	COMPRESSION	REBOUND	AIR PRESSURE	AIR VOLUME SPACER
HIGH SPEED	Position 2	fully closed (+)	75 psi	4 tokens
LOW SPEED	Close 7 clicks from full open	Close 15 clicks from full open		

### **HOW WE RECOMMEND TO START YOUR SETUP**

SETTINGS	COMPRESSION	REBOUND	SAG (%)	AIR VOLUME SPACER
HIGH SPEED	Position 2	Close 1 click from full open	30	Standard
LOW SPEED	Close 5 clicks from full open	Close 5 clicks from full open		

\* for R2C2 Cartridge. For RC2, RC HSR and HSC/HSR settings are pre-defined internally. settings can only be a starting point – safety first.

# DUROLUX EQ (170mm) – RAMPING CURVE



## **QUICK SERVICE PORTS (QSP)**



QUICK SERVICE PORTS (QSP)

### **RELEASE OF PRESSURE**

The quick service ports are meant for actions to improve performance with immediate effect. They cannot replace regular service as recommended in our manual. Potential actions are releasing possible air pressure from the lower legs and lubricating the foam rings placed underneath the dust seals.

### **LUBRIFICATION**

Extensive work sometimes can cause some pressure in the fork legs. Open the QSP port screws by using a 2.5mm allen key and let escape possible pressure. Lubrication: Use a standard syringe made for disc brake bleeding. Using a 2,5mm allen key, release the screw and o-ring on the bottom case and plug the syringe that you will have fullfilled with 15WT oil. Gently compress the syringe until you feel a bit of resistance. Compress and release the fork a few times and then disconnect the syringe (some oil can come out at this stage, this is normal). You can now tighten the screw and o-ring again. Repeat the process on the other side. warning: the excess lubrication oil must be released once every four lubrication. Too much oil in the bottom case can damage the oil cartridge. Always make sure that the amount of oil in one leg never exceed 5CC.

# COMPLEMENTARY MATERIAL AND GLOBAL CONTACT



## REFINED SIMPLICITY

SR SUNTOUR is a Japanese owned bicycle components manufacturer, operating factories in Taiwan, China, and Vietnam, with R&D and service offices collaborating globally for the success of one of the world's most prominent bicycle suspension components manufacturer. With this global infrastructure we strive to create suspension & drive train products for the widest range of people, from World Cup podiums, urban mobility to a kid's first bike. Our goal is to be the industry leader in value performance, reliability, durability, and serviceability following our guiding principle REFINED SIMPLICITY. With roots tracing back to 1912, established 1988.



Click to visit us online



Click to read our PDF-manual



Contact our world-wide distributors



RIDER KYLE WARNER  
LOCATION SANTA CRUZ, USA  
PHOTO HOSHI YOSHIDA